

Zhejiang Kindon Security Equipment Co., Ltd.

2018 CATALOG

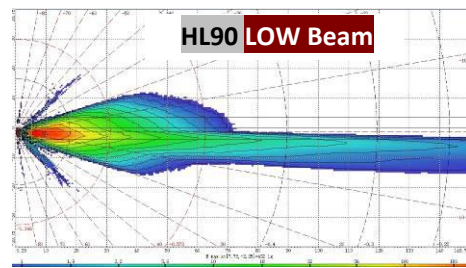
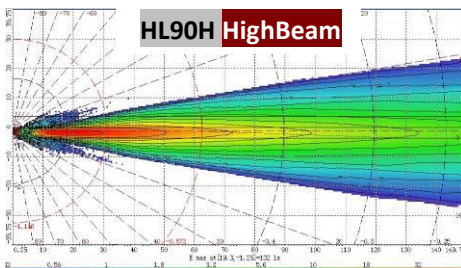
Your Innovative Expert in LED Automotive Lights



HL90 Series $\Phi 90$ mm LED Headlamp

E-mark RoHS CE

Description: Application of the latest patent technology, (Patent No, ZL201320050551.X). Comply with ECE/SAE/GB standards, novel optic design, low consumption, 18W only, international leading technology level, and more energy saving. Widely used for new energy vehicle industry.



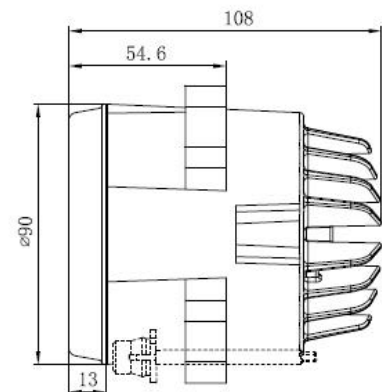
Feature and Specification:

- Function: low beam & high beam.
- Operating voltage: 9~33V DC.
- Operating temperature: -40~80°C.
- **Light source:** OSRAM LEDs.
- Power consumption: 18W max
- Comply with ECE R112/GB14599 and SAE.
- EMC: ECE R10.04 & IEC CIS PR25.
- Outer Lens: UV resistant PC for automotive, special coating for scratch resistance.
- Precision die-cast aluminum base.
- IP67.
- E-mark approval.



HL90-II Low beam

Remark: It is available for light level adjustment motor for headlamp, please check with our company.



Kindon Security Equipment Co., Ltd.

Tel: +86 158 5851 5365 Email: sales@kindonsafety.com

BI-HL90 Φ90mm LED Headlamp, Low Beam+High Beam E-mark RoHS CE

Description: Application of the latest patent technology, Comply with ECE/SAE/GB standards, novel optic design, low consumption, widely used for new energy vehicle industry.

Specification:

- Function: Low Beam+High Beam and optional for Front Position lamp.
- Operating voltage: 10~33VDC.
- Operating temperature: -40~80℃.
- Light source: OSRAM LEDs
- Power: Low Beam 24W; High Beam 30W.
- Comply with ECE R113/ECE R112 GB4599 & GB25991 and SAE
- EMC: ECE R10.04 & IEC CIS PR25.
- Outer Lens: UV resistant PC for automotive.
- Precision die-cast aluminum base.
- IP67.
- E-mark approval.
- Size: 148*103*103mm.



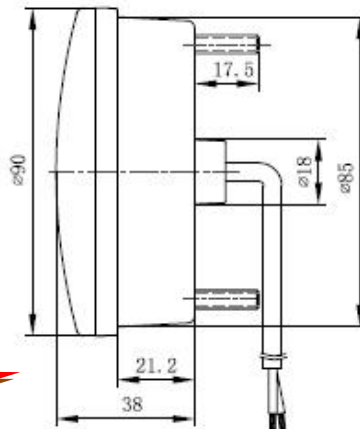
New

C90-FDI/FPL/DRL Φ90mm LED Front Combination E-mark RoHS CE

Description: Comply with ECE/SAE/GB standards, novel optic design, low consumption. Widely used for new energy vehicle industry.



New



- Function: Front Direction Indicator & Front Position Lamp & Day time running Lamp.
- Operating voltage: 10~33VDC.
- Operating temperature: -40~80℃.
- Light source: high efficiency SMT LEDs.
- Power consumption: Front Direction Indicator ~3W; Front position Lamp ~1.5W; DRL ~4W.
- Comply with ECE R6, R7, R87; GB17509, GB5920, GB23255.
- EMC: ECE R10.04.
- Outer Lens: UV resistant PC for automotive.
- Precision die-cast aluminum base.
- IP67.
- E-mark approval.



Kindon Security Equipment Co., Ltd.

Tel: +86 158 5851 5365

Email: sales@kindonsafety.com

A65/A65B Series LED Auto Lamp

New

E-mark RoHS CE

Description: Novel and Compact structure, A65 Series suit for surface mount, A65B Series suit for Recessed installation, fixed from front side of the lamp.



A65-S/T



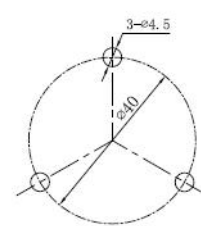
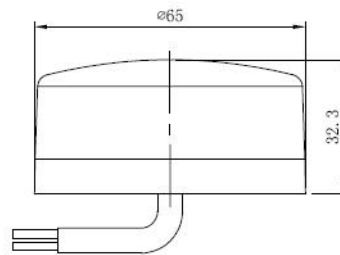
A65-DI



A65-RE



A65-F



A65B-S/T
with decorated ring



A65B-DI
with decorated ring

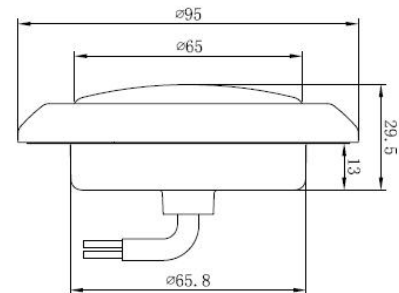


A65B-RE
with decorated ring



A65B-F
with decorated ring

- Operating voltage: DC12V, DC24V or DC9~33V
- Operating temperature: -40~65℃.
- IP67
- Comply with ECE/ADR/SAE/GB standards
- E-mark approval
- Optional color for the decorated ring for A65B, White, Black or Chromed etc.



P/N	Part Name	Standard	LED QTY	Lens	Approval
A65-S/T A65B-S/T	Stop/ Tail lamp	ECE/ADR/GB	Red-12	Red	E-mark
A65-DI A65B-DI	Rear Direction Indicator	ECE/ADR/GB	Amber-12	Amber	E-mark
A65-RE A65B-RE	Reversing lamp	ECE/ADR/GB	White-12	white	E-mark
A65-F A65B-F	Rear Fog lamp	ECE/ADR/GB	Red-12	Red	E-mark

Applications: Widely used on Buses, electric vehicles, trailers, Recreational Vehicles and special vehicles.

Kindon Security Equipment Co., Ltd.

Tel: +86 158 5851 5365 Email: sales@kindonsafety.com

A95 Series LED Auto Lamp & Decorated Ring E-mark RoHS CE

Description: Consisting of A95 a single LED Auto lamp and a decorated ring(optional part), fix the lamp and the ring together on the vehicle, more easy and beautiful. The color for the decorated ring can be customized to match the color of the vehicles.



A95-S/T



A95-DI



A95-F



A95-RE



A95-RR



A95-S/T

with decorated ring



A95-DI

with decorated ring



A95-F

with decorated ring



A95-RE

with decorated ring

Specification:

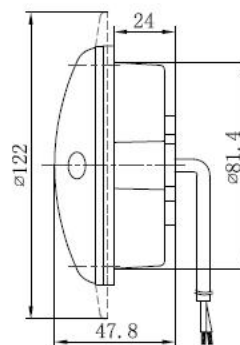
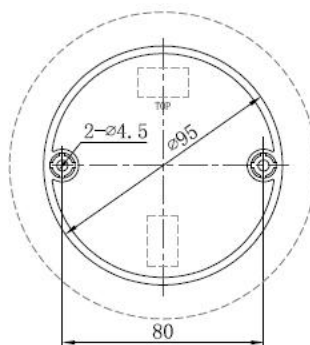
- Operating Voltage: DC12V or DC24V.
- Operating temperature: -40~65℃.
- IP67.
- E-mark approval
- Decorated ring is an Optional part, the color for the decorated ring White, Black or Chromed etc.

Applications: Widely by used on Buses, trailers, trucks, electric vehicles Recreational Vehicles and special vehicles.



Decorated ring: white, Black or Chromed

P/N	Part Name	Standard	LED QTY	Lens	Approval
A95- S/T	Stop/ Tail lamp	ECE/ADR/SAE/GB	Red-14	Red	E-mark 3C
A95-DI	Rear Direction Indicator	ECE/ADR/SAE/GB	Amber-14	Amber	E-mark 3C
A95-RE	Reversing lamp	ECE/ADR/SAE/GB	White-14	white	E-mark 3C
A95-F	Rear Fog lamp	ECE/ADR/SAE/GB	Red-14	Red	E-mark
A95-RR	Retro-reflector	ECE/ADR/SAE/GB		Red	E-mark



Kindon Security Equipment Co., Ltd.

Tel: +86 158 5851 5365

Email: sales@kindonsafety.com

C95 Series LED Auto Light

E-mark  RoHS  CE

Description: Install and fix the lamp from the back side.



C95-S/T/DI



C95-S/T



C95-S/T/RR



C95-DI



C95-FDI



C95-F/RE



C95-RE



C95-F



C95-F/RR

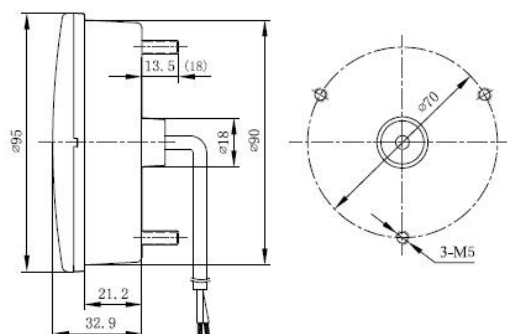


C95-FDI/FPL

Specification:

- Operating Voltage: DC12V, DC24V or DC9~33V.
- Operating temperature: -40~65℃.
- IP67.
- E-mark Approval & 3C certificated.

Applications: Widely used on Buses, trailers, trucks, Recreational Vehicles and special vehicles.



P/N	Part Name	Standard	LED QTY	Lens	Approval
C95- S/T/DI	Stop/ Tail/Direction Indicator	ECE/ADR/SAE/GB	Red-16 Amber-16	Colored or clear	E-mark 3C
C95-S/T	Stop/ Tail lamp	ECE/ADR/SAE/GB	Red-18	Red or clear	E-mark 3C
C95-S/T/RR	Stop/ Tail lamp with Retro-reflector	ECE/ADR/SAE/GB	Red-16	Red	E-mark
C95-DI	Rear Direction Indicator	ECE/ADR/SAE/GB	Amber-18	Amber or clear	E-mark 3C
C95-FDI	Front Direction Indicator	ECE/ADR/SAE/GB	Amber-32	Clear or Amber	E-mark 3C
C95-F/RE	Rear Fog/Reversing lamp	ECE/ADR/SAE/GB	Red-16 White-16	White or colored	E-mark
C95-RE	Reversing lamp	ECE/ADR/SAE/GB	White-18	white	E-mark 3C
C95-F	Rear Fog lamp	ECE/ADR/SAE/GB	Red-18	Red or white	E-mark
C95-F/RR	Rear Fog with Retro-reflector	ECE/ADR/SAE/GB	Red-16	Red	E-mark 3C
C95-FDI/FPL	Front Direction Indicator /Front Position lamp	ECE/ADR/SAE/GB	Amber-16 White-16	white	3C

Kindon Security Equipment Co., Ltd.

Tel: +86 158 5851 5365 Email: sales@kindonsafety.com

C95B Series LED Auto Light

E-mark  RoHS 

Description: Consist of C95B a single LED Auto lamp and a decorated ring, more beautiful. The color for the ring can be customized to match the color of the vehicle. Recessed installation, fixed from front side or back side of the lamp.



C95B-S/T/DI



C95B-S/T



C95B-S/T/RR



C95B-DI



C95B-FDI



C95B-F/RE



C95B-RE



C95B-F



C95B-F/RR

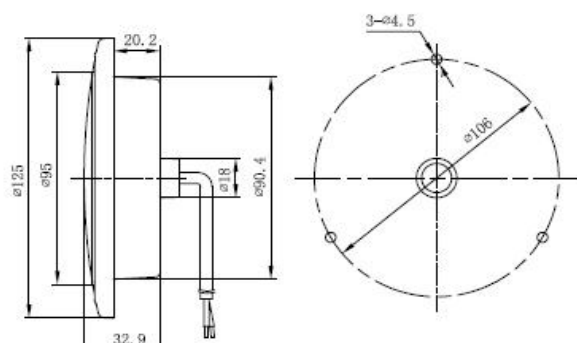


C95B-FDI/FPL

Specification:

- Operating Voltage: DC12V, DC24V or DC9~33V.
- Operating temperature: -40~65℃.
- IP67.
- E-mark Approval & 3C certificated.

Application: Widely used on Buses, trailers, trucks, Recreational Vehicles and special vehicles.



P/N	Part Name	Standard	LED QTY	Lens	Approval
C95B- S/T/DI	Stop/ Tail/Direction Indicator	ECE/ADR/SAE/GB	Red-16 Amber-16	Colored or clear	E-mark 3C
C95B-S/T	Stop/ Tail lamp	ECE/ADR/SAE/GB	Red-18	Red or clear	E-mark 3C
C95B-S/T/RR	Stop/ Tail lamp with Retro-reflector	ECE/ADR/SAE/GB	Red-16	Red	E-mark
C95B-DI	Rear Direction Indicator	ECE/ADR/SAE/GB	Amber-18	Amber or clear	E-mark 3C
C95B-FDI	Front Direction Indicator	ECE/ADR/SAE/GB	Amber-32	Clear or Amber	E-mark 3C
C95B-F/RE	Rear Fog/Reversing lamp	ECE/ADR/SAE/GB	Red-16 White-16	White or colored	E-mark
C95B-RE	Reversing lamp	ECE/ADR/SAE/GB	White-18	white	E-mark 3C
C95B-F	Rear Fog lamp	ECE/ADR/SAE/GB	Red-18	Red or white	E-mark
C95B-F/RR	Rear Fog with Retro-reflector	ECE/ADR/SAE/GB	Red-16	Red	E-mark 3C
C95B-FDI/FPL	Front Direction Indicator /Front Position lamp	ECE/ADR/SAE/GB	Amber-16 White-16	white	3C

Kindon Security Equipment Co., Ltd.

Tel: +86 158 5851 5365 Email: sales@kindonsafety.com

C95C Series LED Auto Lamp

E-mark  RoHS  CE

Description: Surface mounting.



C95C-S/T/DI



C95C-S/T



C95C-S/T/RR



C95C-DI



C95C-FDI



C95C-F/RE



C95C-RE



C95C-F



C95C-F/RR

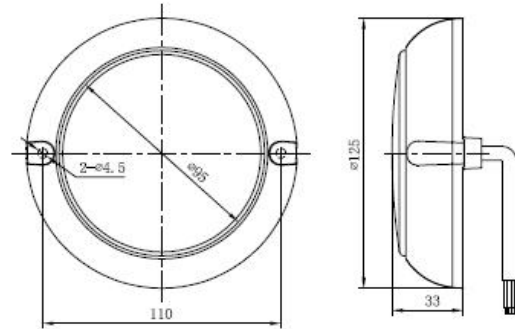


C95C-FDI/FPL

Specification:

- Operating Voltage: DC12V, DC24V or DC9~33V.
- Operating temperature: -40~65℃.
- IP67.
- E-mark Approval & 3C certificated.

Applications: Widely used on Buses, trailer, truck, Recreational Vehicle and special vehicle.



P/N	Part Name	Standard	LED QTY	Lens	Approval
C95C- S/T/DI	Stop/ Tail/Direction Indicator	ECE/ADR/SAE/GB	Red-16 Amber-16	Colored or clear	E-mark 3C
C95C-S/T	Stop/ Tail lamp	ECE/ADR/SAE/GB	Red-18	Red or clear	E-mark 3C
C95C-S/T/RR	Stop/ Tail lamp with Retro-reflector	ECE/ADR/SAE/GB	Red-16	Red	E-mark
C95C-DI	Rear Direction Indicator	ECE/ADR/SAE/GB	Amber-18	Amber or clear	E-mark 3C
C95C-FDI	Front Direction Indicator	ECE/ADR/SAE/GB	Amber-32	Clear or Amber	E-mark 3C
C95C-F/RE	Rear Fog/Reversing lamp	ECE/ADR/SAE/GB	Red-16 White-16	White or colored	E-mark
C95C-RE	Reversing lamp	ECE/ADR/SAE/GB	White-18	white	E-mark 3C
C95C-F	Rear Fog lamp	ECE/ADR/SAE/GB	Red-18	Red or white	E-mark
C95C-F/RR	Rear Fog with Retro-reflector	ECE/ADR/SAE/GB	Red-16	Red	E-mark 3C
C95C-FDI/FPL	Front Direction Indicator /Front Position lamp	ECE/ADR/SAE/GB	Amber-16 White-16	white	3C

Kindon Security Equipment Co., Ltd.

Tel: +86 158 5851 5365 Email: sales@kindonsafety.com

A122 Series LED Auto Lamp

E-mark  RoHS  CE



A122-S/T/DI



A122-S/T/DI/RR



A122-S/T



A122-DI



A122-F/RE



A122-F/RE/RR
A122-RE/RR



A122-RE



A122-F



Specification:

- Operating Voltage: DC12V, DC24V or DC9~33V.
- Operating temperature: -40~65℃.
- IP67.
- E-mark Approval.

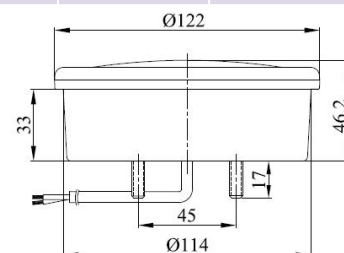
Applications: Widely used on Buses, trailer, truck, Recreational Vehicle and special vehicle.



A122-S/T/DI-II homogenized light for Tail lamp



P/N	Part Name	standard	LED QTY	lens	Approval
A122-S/T/DI	Stop/ Tail/DI	ECE/ADR/SAE/GB	Red-18 Amber-32	Colored	E-mark 3C
A122-S/T/DI-II	Stop/ Tail/DI type II Homogenized light for Tail	ECE/ADR/SAE/GB	Red-18+16 Amber-16	Colored	E-mark
A122-S/T/DI/RR	Stop/ Tail lamp/DI with Retro-reflector	ECE/ADR/SAE/GB	Red-16 Amber-16	Colored	E-mark
A122-S/T	Stop/ Tail lamp	ECE/ADR/SAE/GB	Red-21	Red	E-mark
A122-DI	Rear Direction Indicator	ECE/ADR/SAE/GB	Amber-21	Amber	E-mark
A122-F/RE	Rear Fog/Reversing lamp	ECE/ADR/SAE/GB	Red-18 White-32	White or colored	E-mark
A122-F/RE/RR	Rear Fog/Reversing lamp with Retro-reflector	ECE/ADR/SAE/GB	Red-16 White-16	Colored	E-mark
A122-RE/RR	Reversing lamp with Retro-reflector	ECE/ADR/SAE/GB	White-16	Colored	E-mark
A122-RE	Reversing lamp	ECE/ADR/SAE/GB	White-21	Clear	E-mark
A122-F	Rear Fog lamp	ECE/ADR/SAE/GB	Red-21	Red	E-mark



Kindon Security Equipment Co., Ltd.

Tel: +86 158 5851 5365 Email: sales@kindonsafety.com

A122B Series LED Auto Lamp

E-mark  RoHS  CE

Description: Consist of A122B a single LED Auto lamp and a decorated ring, more beautiful. The color for the ring can be customized to match with the color of the vehicle. Recessed installation, fixed from front side or back side of the lamp.



A122B-S/T/DI



A122B-S/T/DI/RR



A122B-S/T



A122B-DI



A122B-F/RE



A122B-F/RE/RR
A122B-RE/RR



A122B-RE

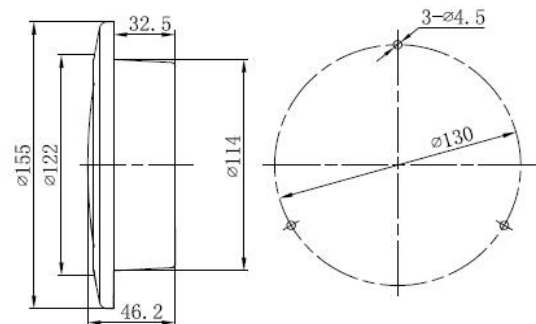


A122B-F

Specification:

- Operating Voltage: DC12V, DC24V or DC9~33V.
- Operating temperature: -40~65°C.
- IP67.
- E-mark Approval.

Applications: Widely used on Buses, trailers, trucks, Recreational Vehicle and special vehicles.



P/N	Part Name	Standard	LED QTY	Lens	Approval
A122B-S/T/DI	Stop/ Tail/Direction Indicator	ECE/ADR/SAE/GB	Red-18 Amber-32	Colored	E-mark 3C
A122B-S/T/DI/RR	Stop/ Tail/Direction Indicator with Retro-reflector	ECE/ADR/SAE/GB	Red-16 Amber-16	Colored	E-mark
A122B-S/T	Stop/ Tail lamp	ECE/ADR/SAE/GB	Red-21	Red	E-mark
A122B-DI	Rear Direction Indicator	ECE/ADR/SAE/GB	Amber-21	Amber	E-mark
A122B-F/RE	Rear Fog/Reversing lamp	ECE/ADR/SAE/GB	Red-18 White-32	White or colored	E-mark
A122B-F/RE/RR	Rear Fog/Reversing lamp with Retro-reflector	ECE/ADR/SAE/GB	Red-16 White-16	Colored	E-mark
A122B-RE/RR	Reversing lamp with Retro-reflector	ECE/ADR/SAE/GB	White-16	Colored	E-mark
A122B-RE	Reversing lamp	ECE/ADR/SAE/GB	White-21	Clear	E-mark
A122B-F	Rear Fog lamp	ECE/ADR/SAE/GB	Red-21	Red	E-mark

Kindon Security Equipment Co., Ltd.

Tel: +86 158 5851 5365 Email: sales@kindonsafety.com

C140 Series LED Auto Lamp

E-mark RoHS CE

Description: Consist of C140 a single LED Auto lamp and a mounting housing. First fix the mounting housing on the vehicle, then fix the lamp on the housing.



C140-S/T/DI



C140-RE



C140-S/T
C140-F



mounting housing

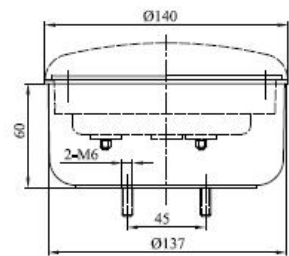
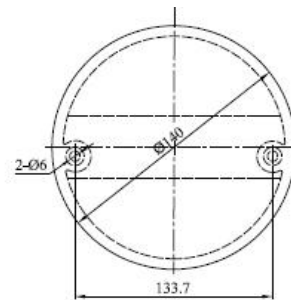
- Operating Voltage: DC12V, DC24V or DC9~33V.

- Operating temperature: -40~65°C.

- IP67.

- E-mark Approved, CE, EMC.

Applications: Widely used on Buses, trailer, truck Recreational Vehicle and special vehicle.



Mounting housing

P/N	Part Name	Standard	LED QTY	Lens	Approved
C140-S/T/DI	Stop/ Tail/Direction Indicator	ECE/ADR/SAE/GB	Red-22 Amber-14	Colored	E-mark
C140-RE	Reversing lamp	ECE/ADR/SAE/GB	White-36	Clear	E-mark
C140-F	Rear Fog lamp	ECE/ADR/SAE/GB	Red-36	Red	E-mark
C140-S/T	Stop/ Tail lamp	ECE/ADR/SAE/GB	Red-36	Red	

C50 Series LED Auto Lamp

New

- Operating Voltage DC12V, DC24V or DC48V.

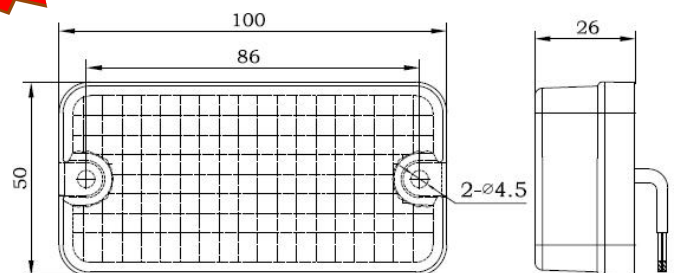
- Operation temperature: -40~65°C.

- Light source: 8pcs high efficient LEDs.

- IP67.

- Comply with ECE/ADR/SAE/GB requirement.

- EMC ECE R10.04



Application: Widely used on forklift, trailer, truck, Recreational Vehicle and special vehicle.



C50-DI Direction Indicator



C50-FDI Front Direction Indicator



C50-S/T Stop/Tail Lamp

Kindon Security Equipment Co., Ltd.

Tel: +86 158 5851 5365

Email: sales@kindonsafety.com

A80 Series LED Auto Lamp

E-mark  RoHS  CE



A80-S/T/DI



A80-F/RE



A80-F/RR



A80-FDI/FPL



Back side



A80-S/T



A80-DI



A80-RE



A80-F

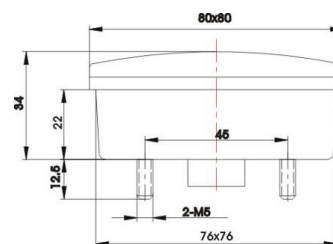


A80-T/DI

P/N	Part Name	Standard	LED QTY	Lens	Approved
A80-S/T/DI	Stop/ Tail/Direction Indicator	ECE/ADR/SAE/GB	Red-12 Amber-12	Red+Amber	E-mark
A80-F/RE	Rear Fog/Reversing lamp	ECE/ADR/SAE/GB	Red-18 White-15	Clear	E-mark
A80-F/RR	Rear Fog lamp with Retro-reflector	ECE/ADR/SAE/GB	Red-8	Red	E-mark
A80-FDI/FPL	Front Direction Indicator	ECE/ADR/SAE/GB	White-6 Amber-27	Clear	E-mark
A80-S/T	Stop/ Tail lamp	ECE/ADR/SAE/GB	Red-16	Red or Clear	E-mark 3C
A80-DI	Rear Direction Indicator	ECE/ADR/SAE/GB	Amber-16	Amber or Clear	E-mark 3C
A80-RE	Reversing lamp	ECE/ADR/SAE/GB	White-16		E-mark 3C
A80-F	Rear Fog lamp	ECE/ADR/SAE/GB	Red-16	Red or Clear	E-mark 3C
A80-T/DI	Rear Direction Indicator	ECE/ADR/SAE/GB	Red-8 Amber-12	clear	E-mark

- Operating Voltage: DC12V, DC24V or DC9~33V.
- IP67.
- Operating temperature: -40~65℃.
- E-mark approval; 3C certificated.

Applications: Widely used on, trailer, truck ,
Recreational Vehicle and special vehicle.



AL30-SDI Side Direction Indicator Cat6

E-mark RoHS  CE

- Operating Voltage: DC12V, DC24V.
- Operating temperature: -40~65℃.
- Light source: SMT LED, Power:~2.5W.
- PC outer Lens, UV Resistant.
- IP67.
- ECE/ADR/SAE/GB requirement.
- E-mark approval (Category 6)
- Fixed: 3M tape.
- Size: L*W*H= 130*25*19mm



Kindon Security Equipment Co., Ltd.

Tel: +86 158 5851 5365 Email: sales@kindonsafety.com

A80B Series LED Vehicle Lamp

E-mark  RoHS  CE

Description: Combined with lamp and surface mounting housing, firstly fix the mounting housing on the body of vehicle. Secondly, push the lamp into the surface mounting housing. Just use a screwdriver to uninstall the lamp.

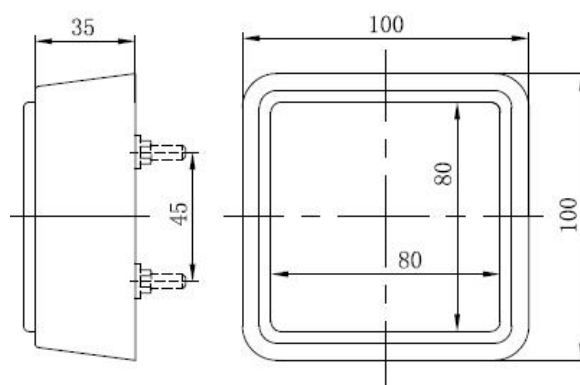


P/N	Name	Standard	LEDs	Outer Lens	Approval
A80B- S/T/DI	Stop/Tail/Direction Indicator	ECE/ADR/SAE/GB	Red-12 Amber-12	Red+Amber	E-mark
A80B-F/RE	Rear Fog/Reverse lamp	ECE/ADR/SAE/GB	Red-18 White-15	Clear	E-mark
A80B-T/RR	Rear position lamp with reflector	ECE/ADR/SAE/GB	Red-8	Red	E-mark
A80B-FDI/FPL	Front Direction Indicator/Front position lamp	ECE/ADR/SAE/GB	White-6 Amber-27	Clear	E-mark
A80B- S/T	stop/Tail lamp	ECE/ADR/SAEGB	Red-16	Red or Clear	E-mark 3C
A80B-DI	Rear direction indicator	ECE/ADR/SAE/GB	Amber-16	Amber or Clear	E-mark 3C
A80B-RE	Reverse lamp	ECE/ADR/SAE/GB	White-16	Clear	E-mark 3C
A80B-F	Rear Fog lamp	ECE/ADR/SAE/GB	Red-16	Red or Clear	E-mark 3C
A80B-T/DI	Rear position/Rear direction indicator	ECE/ADR/SAE/GB	Red-8 Amber-12	Clear	E-mark

Specification:

- Operating Voltage: DC12V, DC24V or DC9~33V.
- IP67.
- Operating temperature: -40~65℃.
- E-mark approval; 3C certificated.

Application: Widely used on Buses, trailer, truck, Recreational Vehicle and special vehicle.





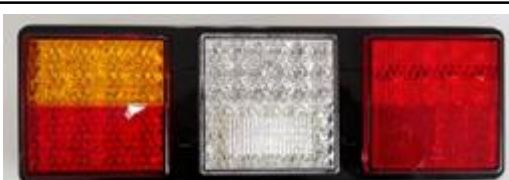


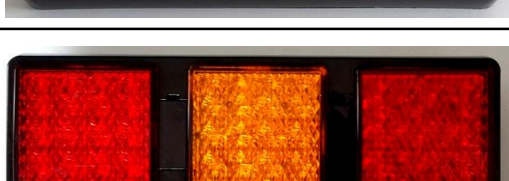
Kindon Security Equipment Co., Ltd.

Tel: +86 158 5851 5365 Email: sales@kindonsafety.com

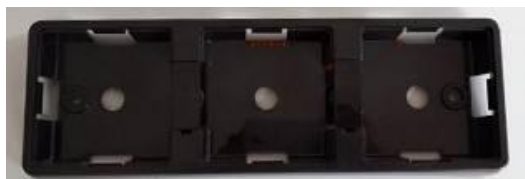
A80B Series Multi-Functional Rear Lamp

E-mark  RoHS  CE

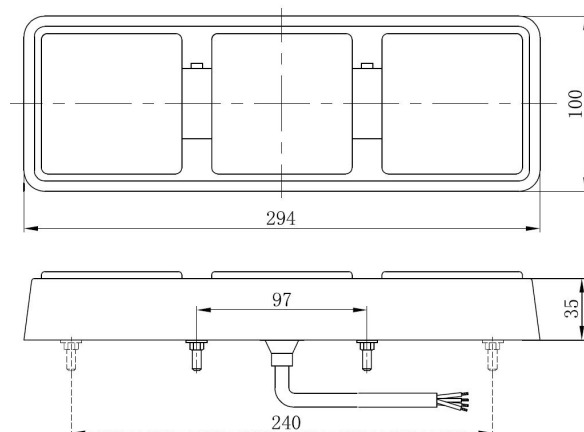
Description: Combined with a couple of A80B single LED lamp and surface mounting housing. Firstly fix the mounting housing on the body of vehicle, secondly, push the lamp into the surface mounting housing,

P/N	Name/Function	Picture	Remark
A80B- DI+S/T+RE	Direction Indicator+Stop/Tail +Reverse Lamp		For both side, right and left of vehicle no Rear Fog lamp
A80B-S/T/DI+RE +F/RR	Stop/Tail/Direction Indicator+ Reverse+ Rear Fog/Retro-reflector		For both side, right and left of vehicle
A80B-S/T/DI+RE+F	Stop/Tail/Direction Indicator+ Reverse+ Rear Fog		For both side, right and left of vehicle
A80B-S/T/DI+F/RE	Stop/Tail+Direction Indicator+ Rear Fog/Reverse lamp		For both side, right and left of vehicle
A80B-S/T/DI+RE	Stop/Tail+Direction +Reverse lamp		For Right side of the vehicle
A80B-S/T/DI+F	Stop/Tail+Direction +Rear Fog lamp		For Left side of the vehicle

- Operating Voltage: DC12V, DC24V or DC9~33V.
- Operating temperature: -40~65℃.
- Light source: high efficiency LED.
- IP67.
- E-mark Approval.



3 Surface Mounting housing



Kindon Security Equipment Co., Ltd.

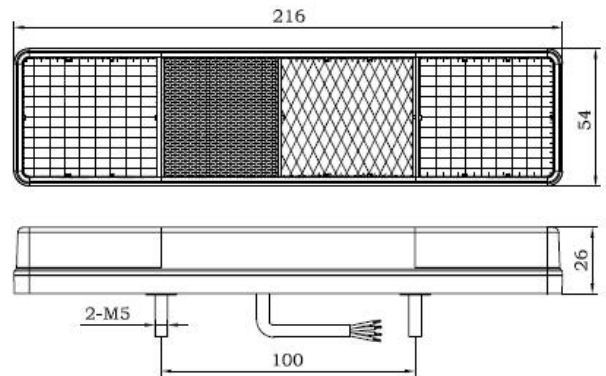
Tel: +86 158 5851 5365 Email: sales@kindonsafety.com

C50-S/T/DI/RE/RR Rear Combination

E-mark RoHS CE

Function: Rear Direction Indicator/Stop/Tail/Reversing and Retro-reflector

- Operating Voltage: DC12V, DC24V or DC48V.
- Operating temperature: -40~65℃.
- Light source: 3W*12pcs high efficiency LEDs.
- IP67.
- Comply with ECE/ADR/SAE/GB requirements.
- EMC ECE R10.



Application: Widely used on forklift, trailer, truck, Recreational Vehicle and special vehicle.

L2600 Series Rear Lamp

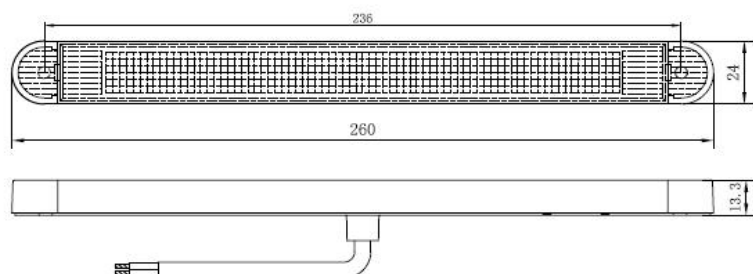


E-mark CCC RoHS CE

- Operating Voltage: DC12V, DC24V or DC9~33V.
- Operating temperature: -40~65℃.
- Light source: 12pcs of high efficiency LEDs.
- IP67.
- Comply with ECE/ADR/SAE/GB Requirements.
- E-mark Approval, 3C certificated.
- EMC: ECE R10.04
- Mounted: Horizontal/vertical or any angle direction.



P/N	Function	Standard	LEDs	Outer Lens	Approval
L2600-STL	Stop/Tail	ECE/ADR/SAE/GB	Red-12	Red	E-mark 3C
L2600-DIR	Rear Direction Indicator	ECE/ADR/SAE/GB	Amber-12	Amber	E-mark 3C
L2600-RVL	Reverse lamp	ECE/ADR/SAE/GB	White-12	white	E-mark 3C
L2600-FLR	Rear Fog lamp	ECE/ADR/SAE/GB	Red-12	Red	E-mark



Kindon Security Equipment Co., Ltd.

Tel: +86 158 5851 5365

Email: sales@kindonsafety.com

C55 Series LED Auto Lamps

CCC E-mark RoHS CE



C55-F



C55-RE



C55-DI

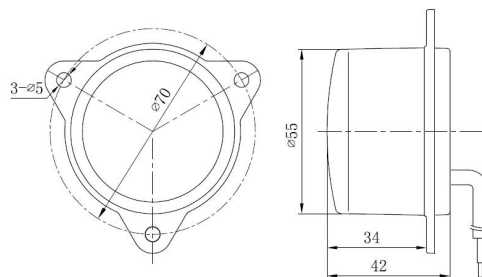


C55-FDI

P/N	Name	Standard	Watt	Outer Lens	Approval
C55-F	Rear Fog lamp	ECE/ADR/SAE/GB	4W	Red or Clear	E-mark 3C
C55-RE	Reversing lamp	ECE/ADR/SAE/GB	2W	Clear	E-mark 3C
C55-DI	Rear Direction Indicator	ECE/ADR/SAE/GB	2W	Amber	E-mark
C55-FDI	Front Direction Indicator	ECE/ADR/SAE/GB	4W	Clear or Amber	E-mark

- Operating Voltage: DC12V, DC24V or DC9~33V.
- Operating temperature: -40~65°C.
- IP67.
- E-mark approval.

Application: Widely used on electric vehicle, trailer, Recreational Vehicle and special vehicle.



C2/S2 2 " Position Lamp/End-outline lamp

- Operating Voltage: DC12V or DC24V.
- Operation temperature: -40~65°C.
- Light source: 4pcs high efficient LEDs.
- IP67.
- Comply with ECE/ADR/SAE/GB requirement.



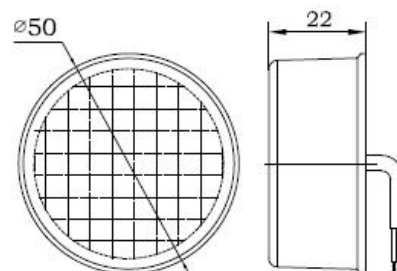
S50-SM Sidemarker



S50-RPL Rear Position



S50-FPL Front Position



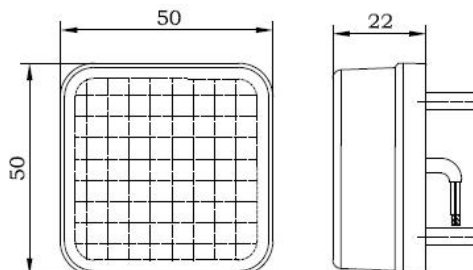
C50-SM Side marker



C50-RPL Rear Position



C50-FPL Front Position



Application: Widely used on forklift, trailer, truck, Recreational Vehicle and special vehicles.

Kindon Security Equipment Co., Ltd.

Tel: +86 158 5851 5365 Email: sales@kindonsafety.com

C55 Series LED Position Lamp/End-outline lamp

E-mark RoHS CE

Description: Surface mount Installation.



C55-RPL Rear Position Lamp



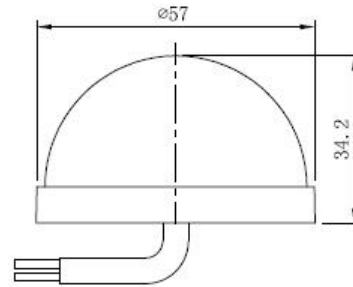
C55-FPL Front Position Lamp



C55-SM Side Mark

New

- Operating Voltage: DC12V or DC24V.
- Operating temperature: -40~65°C.
- Light source: 6pcs of high efficiency LEDs.
- IP67.
- Comply with ECE/ADR/SAE/GB requirements.
- E-mark approvable.



C35 LED Position Lamp/End-outline lamp

E-mark RoHS CE



C35-FPL Front position



C35-RPL Rear position



C35-SM Side Mark



C35-SM-AR Side Mark
Dual Color: Amber+Red



C35-FPL-II Front Position lamp
with decorated bottom



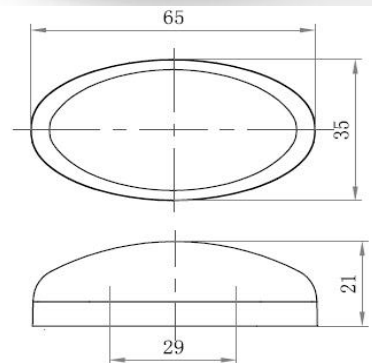
C35-RPL-II Rear Position lamp
with decorated bottom



C35-SM-II Side Marker lamp
with decorated bottom

- Operating Voltage: DC12V or DC24V.
- Operating temperature: -40~65°C.
- Light source: 6pcs High efficiency SMT LEDs.
- IP67.
- Comply with ECE/SAE/ADR/GB requirement.
- E-Mark approvable
- 3C certificated.

New



Application: Widely by used on Buses, trailer, truck, Recreational Vehicle and special vehicle.

Kindon Security Equipment Co., Ltd.

Tel: +86 158 5851 5365 Email: sales@kindonsafety.com

AL1330 LED End-outline lamp

E-mark RoHS CE



AL1330 Grey housing



AL1330-W White housing

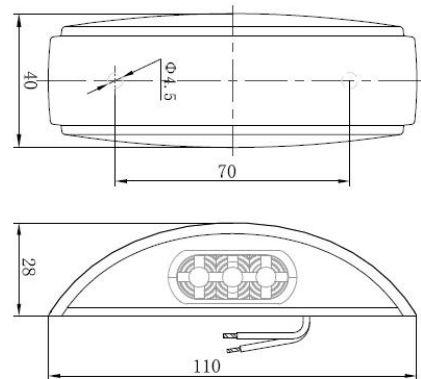


AL1330-B Black housing

Specification:

- Operating Voltage: DC12V, DC24V or DC9~33V.
- Operating temperature: -40~65°C.
- Light source: 3 Red+3 white SMT LEDs.
- IP67.
- Comply with ECE/SAE/ADR/GB Requirement.
- E-mark approval.

Application: Widely used on Buses, trailer, truck, Recreational Vehicle and special vehicle.



C1060 LED Position Lamp/End-outline lamp

E-mark CCC RoHS CE



C1060-FPL Front Position Lamp

C1060-FPR Front Position lamp with Retro-reflector



C1060-SM Side mark

C1060-SMR Side mark Lamp with retro-reflector



C1060-RPL Rear Position Lamp

C1060-RPR Rear Position lamp with Retro-reflector

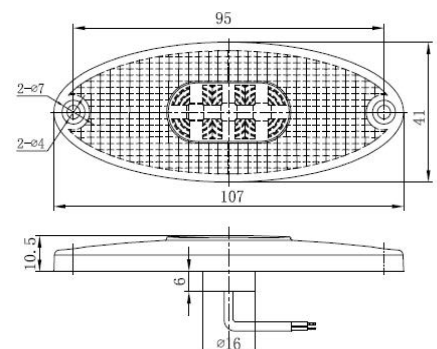
Specification:

- Operating Voltage: DC9~33V.
- Operating temperature: -40~65°C.
- Light source: 3pcs of high efficiency LEDs.
- IP67.
- Comply with ECE/SAE/ADR/GB Requirement.
- E-mark approvable; 3C Certificated.
- Fixed: by Screws or 3M .
- Optional mounting housing: Chromed, White, Black etc

Applications: Widely used on Buses, trailer, truck, Recreational Vehicle and special vehicle.



Mounting housing: Chromed, white, Black





Kindon Security Equipment Co., Ltd.

Tel: +86 158 5851 5365

Email: sales@kindonsafety.com

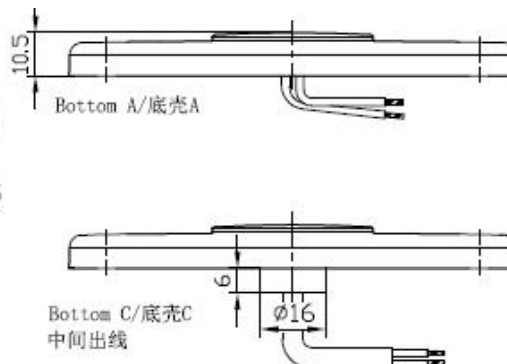
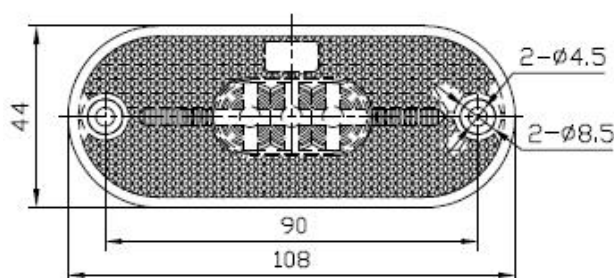
AL1080/AL1080C Side Marker/End Out-line Lamps E-mark ADR RoHS

Description: Slim design, creative structure, not only meet ADR special requirement, but also comply with ECE, SAE, GB requirements. ADR approval and E-mark approval.

P/N	Part Name	Photo	Approval、Comment
AL1080-FMR	Front position With Retro-reflector		● ECE R7 ● 3+2pcs LEDs white
AL1080C-FMR			● ADR49, ECE R7 ● 3pcs LEDs white
AL1080-RMR	Rear position With Retro-reflector		● ECE R7 ● 3+2pcs LEDs Red
AL1080C-RMR			● ADR49, ECE R7 ● 3pcs LEDs Red
AL1080-SMR	Side marker lamp With Retro-reflector		● ECE R7 ● E-mark/3C ● 3+2pcs LEDs Red
AL1080C-SMR			● GB, ECE R7 ● 3C certificated ● 3pcs LEDs Amber
AL1080C-SMR-A	Side Mark lamp Red/Amber For ADR		● ADR45 ● 6cs LEDs Red+Amber
AL1080C-SDI	Side Marker lamp With Retro-reflector		● ADR6, ECE R6 ● 3pcs LEDs Amber
	Side Direction Indicator Cat5 With retro-reflector		

New

- Operating Voltage: DC12V, DC24V or DC9~33V.
- Operating Temperature: -40~65℃.
- UV resistant PMMA outer lens.
- Comply with ECE/ADR/SAE/GB requirements.
- E-mark & ADR Approval.
- Optional bottom for cable outlet position as below draft.
- IP67.



Kindon Security Equipment Co., Ltd.

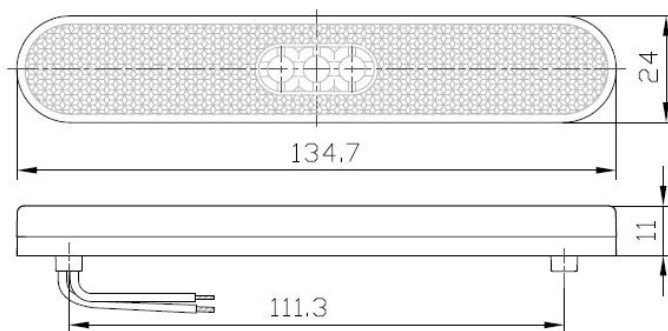
Tel: +86 158 5851 5365 Email: sales@kindonsafety.com

AL130 Series Side Marker/ End Out-line Marker Lamps

E-mark RoHS CE

- Operating Voltage: DC12V, DC24V or DC9~33V.
- Operating temperature: -40~65°C.
- Light Source: 3pcs of high efficiency LEDs.
- IP67
- Comply with ECE/SAE/GB requirements
- E-Mark Approval
- Fixed: 3M adhesive tape, easier to fix

Application: Widely used on Buses, trailer, truck ,
Recreational Vehicle and special vehicle.



AL130-RMR Rear Position



AL130-SMR Sider Marker

AL60 Side Marker/End Out-line Marker Lamps

E-mark RoHS CE



- Operating Voltage: DC12V, DC24V or DC9~33V.
- Operating temperature: -40~65°C.
- Light Source: 3pcs of high efficiency LEDs.
- IP67.
- Comply with ECE/SAE/GB requirements.
- E-Mark Approval.
- Fixed: 3M adhesive tape, easier to fix.
- Size: $\Phi 60 \times 12$ mm.



AL60-FMR Front Mark
lamp with retro-reflector



AL60-RMR Rear Mark
lamp with retro-reflector

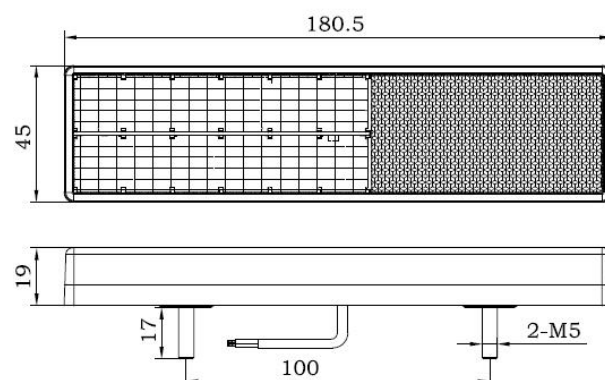


AL60-RM
Rear position lamp

180-F/RR Rear Fog with Retro-reflector

E-mark CCC RoHS CE

- Operating Voltage: DC12V, DC24V, DC9~33V.
- Operating temperature: -40~65°C.
- Light Source: 12pcs of high efficiency LEDs.
- IP67.
- Comply with ECE/SAE/GB requirements.
- E-Mark approvable; 3C certificated.



Kindon Security Equipment Co., Ltd.

Tel: +86 158 5851 5365

Email: sales@kindonsafety.com

AL30/AL30C Positon Lamp/Side Marker lamp

E-mark RoHS CE

Description: Recessed installation, easier to install, suitable for 1.0~2mm thickness of the panel, cutting size of mounting hole as below



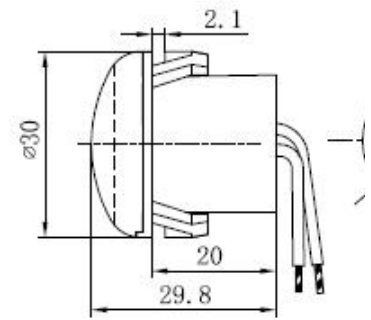
AL30-FPL
Front Position Lamp



AL30-RPL
Rear Position Lamp



AL30-SM
Side Marker Lamp



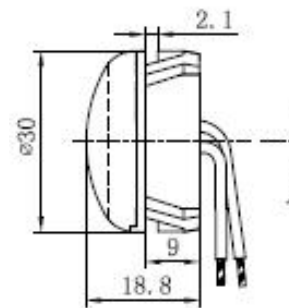
AL30C-FPL
Front Position Lamp



AL30C-RPL
Rear Position Lamp

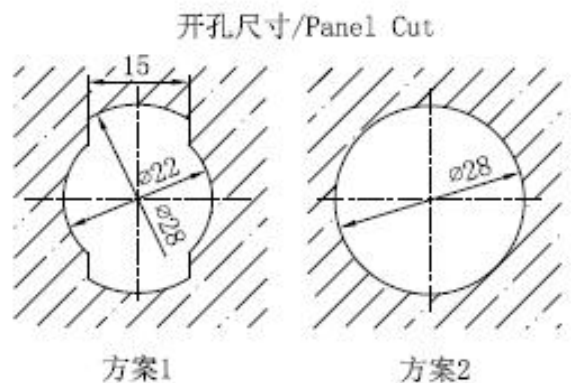


AL30C-SM
Side Marker Lamp



Specification:

- Operating Voltage: DC12V, DC24V or DC9~33V.
- Operating Temperature: -40~65°C.
- Light source: high power LED, 0.5W.
- Outer lens: UV resistant PMMA.
- IP67.
- Comply with ECE/ADR/SAE/GB requirements.
- E-mark approval.
- **Applications:** Widely used on Buses, trailer, truck, Recreational Vehicle and special vehicle.

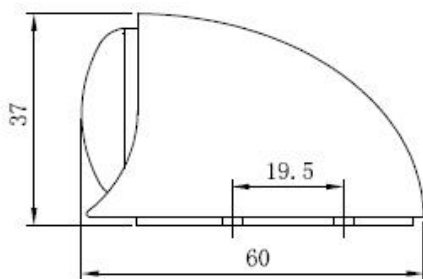


AL30 Series Position Lamp with surface mounting housing

Description: Consist of AL30 lamp and surface mounting housing, suit to fix on the top of the vehicle.

Optional Color for surface mounting housing: white, black or customized

Specification: See Above



AL30-FPL+H
AL30C-FPL+H
Front Position Lamp



AL30-RPL+H
AL30C-RPL+H
Rear Position Lamp

Kindon Security Equipment Co., Ltd.

Tel: +86 158 5851 5365 Email: sales@kindonsafety.com

AL30 Series Position Lamp/Side Marker lamp With Grommet E-mark RoHS CE

Description: Recessed installation, suitable for 1.0~5mm thickness of the panel, cutting size of mounting hole as below.



AL30-FPL+G
Front Position



AL30-RPL+G
Rear Position Lamp



AL30-SM+G
Side Marker

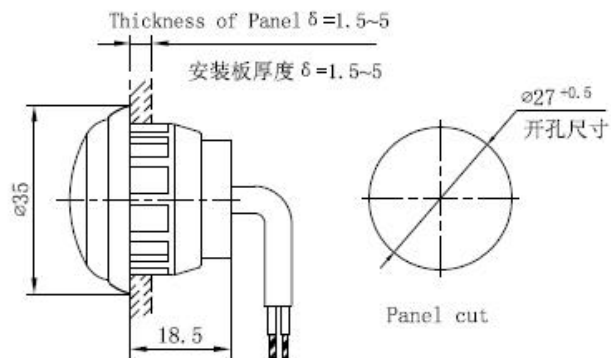


Grommet

Specification:

- Operating Voltage: DC12V, DC24V or DC9~33V.
- Operating Temperature: -40~65°C.
- Light source: high power LED, 0.5W.
- Outer lens: UV resistant PMMA.
- IP67.
- Comply with ECE/ADR/SAE/GB requirements.
- E-mark approval.

Applications: Widely used on Buses, trailer, truck ,
Recreational Vehicle and special vehicle.



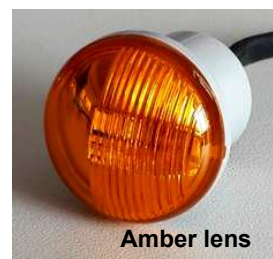
AL30-SDI Side Direction Indicator Cat5.

New

- Operating Voltage: DC12V, DC24V or DC9~33V
- Operating Temperature: -40~65°C
- Light source: high power LEDs, 0.5W
- Outer lens: UV resistant PMMA
- IP67
- Comply with ECE/ADR/SAE/GB requirements
- E-mark approval (Category 5)



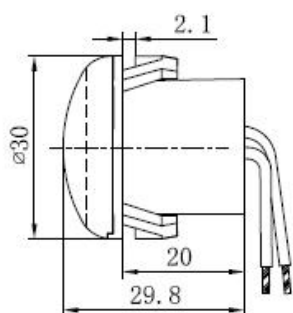
AL30-SDI-C
AL30-SDI-C-3M with 3M tape



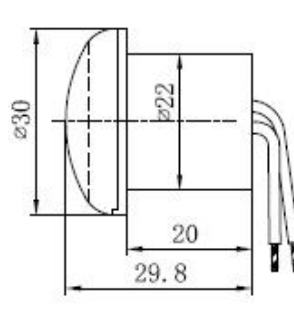
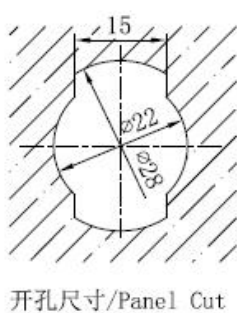
AL30-SDI
AL30-SDI-3M with 3M tape

Applications: Widely used on Buses, trailer, truck, Recreational Vehicle and special vehicle.

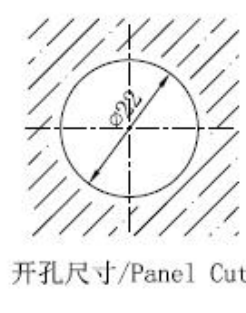
Installation: 3M tape or Recessed Installation, the cutting size of mounting hole as below draft.



Recessed Installation



Fixed with 3M tape



Kindon Security Equipment Co., Ltd.

Tel: +86 158 5851 5365

Email: sales@kindonsafety.com

AL27 Series LED Position Lamp, side marker lamp E-mark RoHS



AL27-FPL Front Position Lamp



AL27-RPL Rear Position Lamp

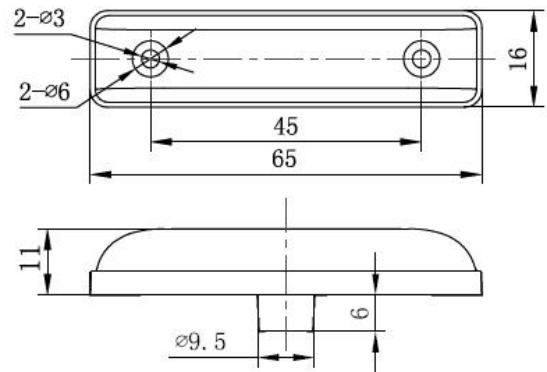


AL27-SM Side Marker Lamp

Specifications:

- Operating Voltage: DC12V, DC24V
- Operating Temperature: -40~65°C
- Light Source: 4pcs high efficiency SMT LEDs
- IP67
- Comply with ECE/ADR/SAE/GB requirements
- E-Mark & 3C Approval

Application: Widely used on Buses, trailer, truck, Recreational Vehicle and special vehicle.



AL28 Series LED Position Lamp

E-mark RoHS 

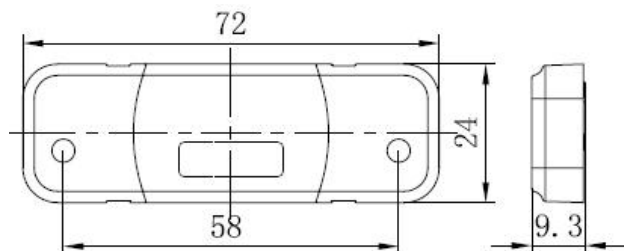


AL28-RPL Rear Position Lamp



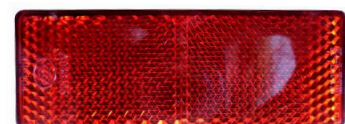
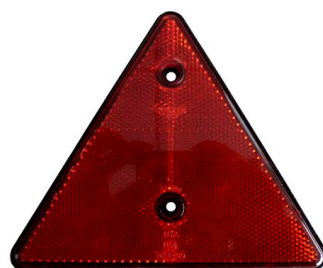
AL28-FPL Front Position Lamp

- Operating Voltage: DC12V, DC24V.
- Operating Temperature: -40~65°C.
- Light Source: 2pcs of high efficiency SMT LEDs.
- IP67.
- Comply with ECE/ADR/SAE/GB requirements.
- E-Mark approval.
- Fixed: Permanent mount or more convenient to fix with 3M tape.



Retro-Reflector for Truck and Trailer E-mark

Round, Square, Triangle etc



Kindon Security Equipment Co., Ltd.

Tel: +86 158 5851 5365 Email: sales@kindonsafety.com

S3-056 High Mounted Stop Lamp

E-mark RoHS CE



New

- Operating Voltage: DC12V, DC24V.
- Operating Temperature: -40~65°C
- Light Source: 12 PCS of high efficiency SMT LEDs.
- UV resistant PC outer lens.
- IP67.
- Comply with ECE/ADR/SAE/GB requirements.
- E-Mark approval.
- IP67.
- Fix: Permanent mount by screw.
- E-Mark approval.
- Size: 560*24*11mm.



S3-028 LED High Mounted Stop Lamp

CCC E-mark RoHS CE

Description: 9mm Slim design, more suitable for small place or space which have limitation

S3-028 Red lens, Sided wire

S3-028-M Red lens, Center wire

S3-028-C White lens, Sided wire

S3-028-CM White lens, Center wire

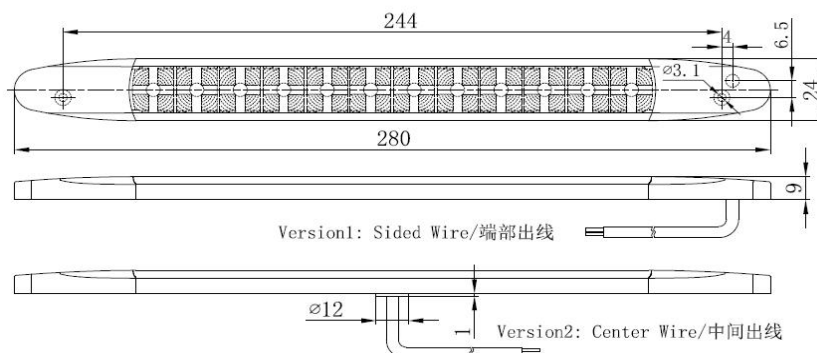


Specifications:

- Operating Voltage: DC12V, DC24V or DC9~33V.
- Operating Temperature: -40~65°C.
- Light Source: 12 PCS of high efficiency SMT LEDs.
- UV resistant PC outer lens.
- Optional outer Lens color: Red or Clear.
- IP67.
- Comply with ECE/ADR/SAE/GB requirements,
- E-Mark approval, 3C Certified
- Fixed: Permanent mount or more convenient to fix with 3M tape.



Application: Widely used on
Buses, trailer, truck, Recreational
Vehicle and special vehicles.

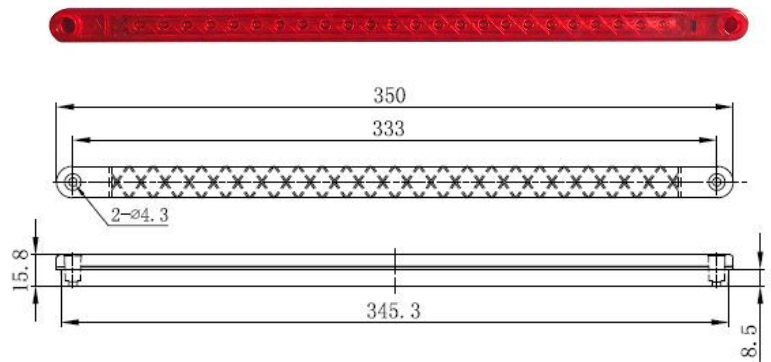


Kindon Security Equipment Co., Ltd.

Tel: +86 158 5851 5365 Email: sales@kindonsafety.com

S3-027 LED High Mounted Stop Lamp

- Operating Voltage: DC12V or DC24V.
- Operating Temperature: -40~65°C.
- Light Source: 24pcs of high efficiency LEDs.
- UV resistant PC outer lens.
- Outer lens color: red or clear.
- IP67.
- Comply with ECE/ADR/SAE/GB requirements
- E-Mark approval; 3C Certificated
- Recessed Installation.



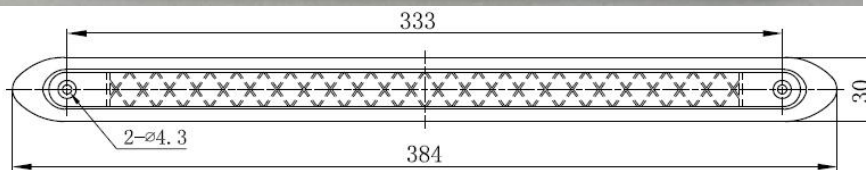
S3-027 LED High Mounted Stop Lamp with surface mounting

Description: Consist of S3-027 high mounted stop lamp and surface mounting housing. Fix the lamp and the housing together on the vehicle, more easy and beautiful. The color can be customized to match with the color of the vehicle



Surface mounting housing:

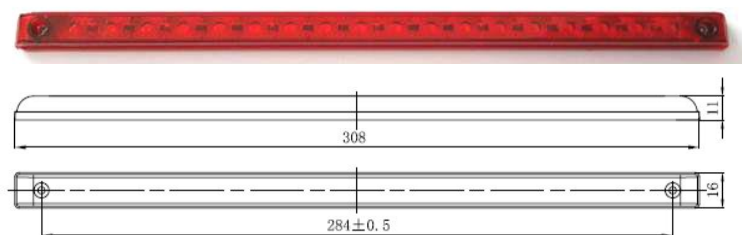
- UV resistant
- Optional color: white, black or customized.



S3-029 LED High Mounted Stop Lamp

Description: Slim design, Surface mounting, easy to install

- Operating Voltage: DC12V or DC24V.
- Operating Temperature: -40~65°C.
- Light Source: 18 PCS of high efficiency SMT LEDs.
- UV resistant PC outer lens.
- Optional outer Lens color: Red or Clear.
- IP67.
- Comply with ECE/ADR/SAE/GB requirements.
- E-Mark approval.
- Fixed by Screw.



Kindon Security Equipment Co., Ltd.

Tel: +86 158 5851 5365 Email: sales@kindonsafety.com

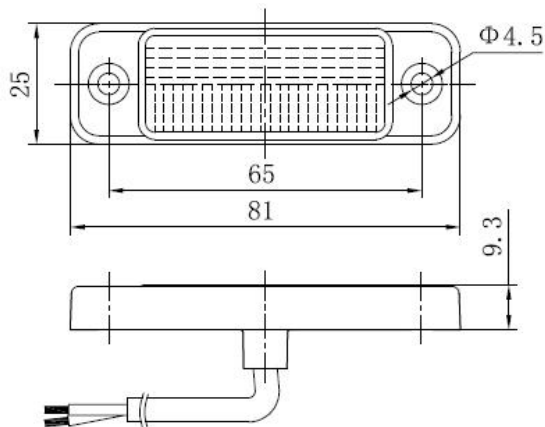
AL25-LP LED License Plate Lamp

CCC E-mark RoHS CE

- Operating Voltage: DC12V, DC24V or DC9~33V
- Operating temperature: -40~65°C.
- Light Source: 4pcs of high light efficiency SMT LEDs.
- IP67.
- Comply with ECE/ADR/SAE/GB requirements.
- E-Mark approval; 3C Certificated.

Application: Widely used on Buses, trailer, truck ,
Recreational Vehicle and special vehicle.

Remark for Installation: a couple of 2 lamps, please refer to
the specification on the certificate.



Chromed housing



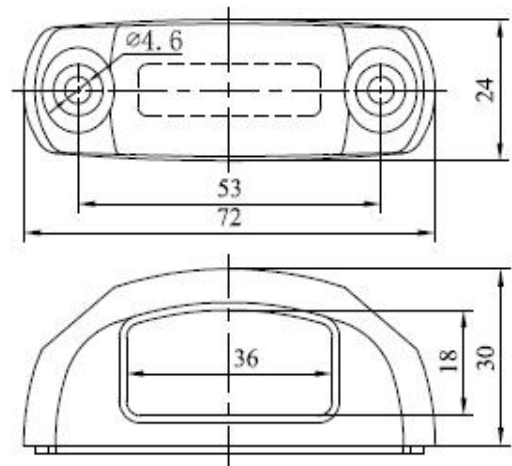
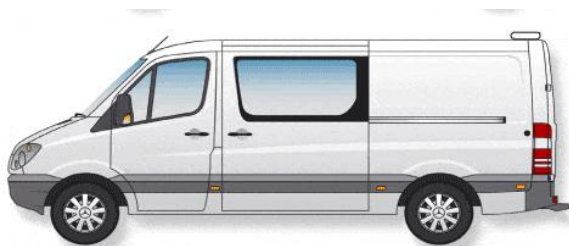
C02-LP LED License Plate Lamp

E-mark RoHS CE

- Operating Voltage: DC9~33V.
- Operating temperature: -40~65°C.
- Light Source: 4pcs of high light efficiency SMT LEDs.
- IP67.
- Comply with ECE/ADR/SAE/GB requirements.
- E-Mark approvable.

Application: Widely used on Buses, trailer, truck ,
Recreational Vehicle and special vehicle.

Remark for Installation: a couple of 2 lamps, please refer
to the specification on the certificate.

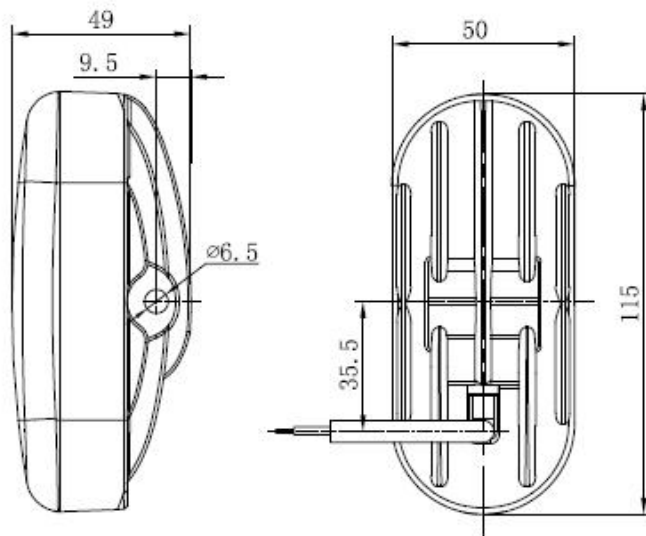


MY01-HL/FDI LED Headlight for Scooter

E-mark RoHS CE

Description: Application of patented technology widely used on Scooters, wheelchairs, electric bicycles.

- **Function:** Headlight + Front Direction Indicator.
- Operating Voltage: DC9~33V.
- Operating Temperature: -40~65°C.
- Light Source: high Power efficiency SMT LEDs.
- Comply with ECE R6 and T23 requirements.
- E-Mark approval.
- UV resistant PC outer lens.
- IP67.
- Aluminum die-casting housing.



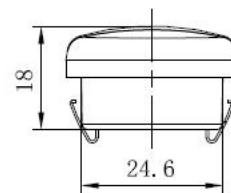
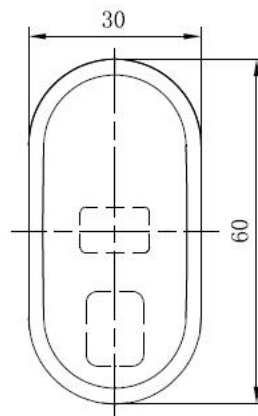
MY01-HL/FDI

MY01-T/DI LED Rear lamp

E-mark RoHS CE

Description: Application of patent technology, widely used on Scooter, wheelchair, electric vehicle.

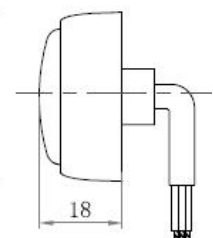
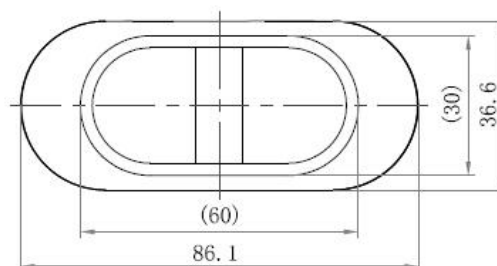
- **Function:** Rear Position lamp +Direction Indicator.
- Operating Voltage: DC9~33V.
- Operating Temperature: -40~65°C.
- Light Source: high Power efficiency SMT LEDs.
- Comply with ECE R6 R7 Requirement.
- E-Mark approval.
- UV resistant outer lens.
- IP67.
- Recessed installation or surface mounting



MY01-T/DI



MY01B-T/DI Surface mounting



Kindon Security Equipment Co., Ltd.

Tel: +86 158 5851 5365




Email: sales@kindonsafety.com

BL100/BL100E LED Warning Beacon ECE R65

E-mark RoHS CE

Description: Application of the latest patent technology, meeting to ECE R65&SAE J845 requirements, the beacon has even and continuous and very strong light in a horizontal 360° degree

New

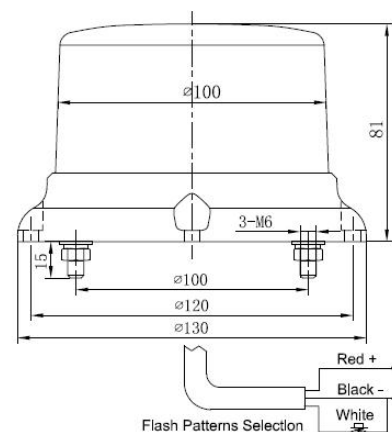
P/N	Color	Standard	Fixed	Approval	Power	Picture
BL100-A	Amber	ECE R65 Class1 SAE J845 Class1 EMC R10.04&CIS PR25	Permanent	ECE R65 ECE R10.04	25W max	
BL100-A-M			magnet			
BL100-A-DIN			DIN mounting			
BL100-BL	Blue	ECE R65 Class1 SAE J845 Class1 EMC R10.04&CIS PR25	Permanent	ECE R10.04	25W max	
BL100-BL-M			magnet			
BL100-BL-DIN			DIN mounting			
BL100-R	Red	ECE R65 Class1 SAE J845 Class1 EMC R10.04&CIS PR25	Permanent	E-mark ECE R10.04	25W max	
BL100-R-M			magnet			
BL100-R-DIN			DIN mounting			



Magnet



DIN mounting



Specs&Feature:

- Operating Voltage: DC9~33V, DC9~60V.
- Operating Temperature: -40~65°C.
- Light source: 12*3W high power LEDs.
- Light color: Amber, blue, red light or other customized light.
- 360°strobe, Built-in Flasher with 9 Flash light patterns(optional), PC programmable control.
- Comply with ECE R65 requirements, including standard quad flash, double flash, also with a simulative Rotating pattern, or other customized flash patterns.
- Selecting Flash light pattern, by using the White wire to touch the Black wire“-”.
- Multiple beacons may be connected to provide synchronous or alternate flash patterns.
- Reverse polarity protect.
- UV resistant of PC outer lens and Aluminum alloy die-cast bottom, with powder coated finished; stainless steel hardware.
- IP67 Rated.
- EMC: Compliance with ECE R10.04.
- **Fixed:** Permanent mount, magnetic base with Cig plug adapter and single pole plug to spec. DIN72591(ISO 4165).

Application: It was widely used on emergency vehicles, agricultural machinery, boat , road safety, navigation lantern, obstacle light for building.







Kindon Security Equipment Co., Ltd.

Tel: +86 158 5851 5365 Email: sales@kindonsafety.com

LB130 Series LED Beacon, ECE R65 & SAE AMECA Approval E-mark RoHS CE

Description: Application of the latest patent technology, according to ECE R65&SAE J845 requirement to develop, the beacon projects even and continuous light in a horizontal 360°degree and achieve a brand-new performance.

P/N	Color	Standard	Fixed	Approval	watt	
LB130-A12	Amber	ECE R65 Class1 SAE Class1 ECR R10.04	Permanent	E-mark approval AMECA certificated	27W max	
LB130-A12-M			magnet			
LB130-A12-DIN			Din mounting			
LB130-BL	Blue	ECE R65 Class1 SAE Class1 ECE R10.04	Permanent	E-mark approval	27W max	
LB130-BL-M			magnet			
LB130-BL-DIN			Din Mounting			
LB130-R	Red	ECE R65 Class1 SAE Class1 ECE R10.04	Permanent	E-mark approvable	27W max	
LB130-R-M			magnet			
LB130-R-DIN			Din mounting			
LB130-R/BL	Red +blue	ECE R65 Class1 SAE Class1 ECE R10.04	Permanent	E-mark approvable	36W max	
LB130-R/BL-M			magnet			
LB130-R/BL-DIN			Din mounting			

Specs & feature:

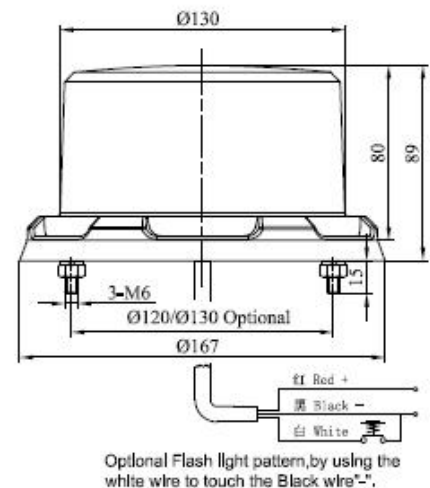
- Operating voltage: DC9~33V
- Operating Temperature:-40~65℃
- Light source: 12*3W Gen3 high power LEDs
- Light color: Red, Blue, Amber, Red &blue, Green,White etc. colored lens or clear lens
- 360°strobe, Built-in Flasher with 9 Flash light patterns, including standard quad flash and double flash also with simulative rotating pattern, or customized flash patterns.
- Optional Flash light pattern, by using the white wire to touch the negative wire (black one)
- Synchronous and Asynchronous flash patterns of two or more lamps is available
- Reverse polarity protect
- UV resistant of PC outer lens; Aluminum alloy die-cast bottom, with powder coated finished; stainless steel hardware
- IP67 Rated;
- EMC: Compliance with ECE R10.04
- Fixed: Optional Permanent mount, Pole of Din mounting and magnetic mount with Cig plug



Magnet



DIN mounting



Application:It was widely used on emergency vehicles, agricultural machinery, boat, road safety, navigation lantern, obstacle light for building.

Kindon Security Equipment Co., Ltd.

Tel: +86 158 5851 5365 Email: sales@kindonsafety.com

LB130-A18 LED Beacon ECE R65 Class2

E-mark RoHS CE

Description: Application of the latest patent technology, according to ECE R65 Class 2 requirement to develop.

New



LB130-A18- Magnet



LB130-A18 fixed with screw



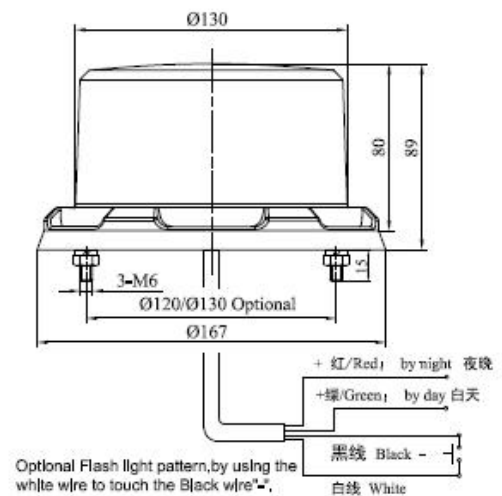
LB130-A18 DIN mounting

- Operating voltage: DC9~33V
- Operating Temperature: -40~65°C
- Light Source: 18pcs*3W high Power efficiency LED
- Power: ~ 36W max
- Color: Amber or other customized color
- Compliance with **ECE R65 Class2**

※ **Two-level light intensity (high/low) output, to meet different requirement of the day and night**

- 360°strobe, Built-in Flasher with 9 Flash light patterns, with simulative rotating pattern, or customized flash pattern.
- Optional Flash light pattern, using the white wire to touch the negative wire (black one)
- Reverse polarity protect
- UV resistant of PC outer lens;
- Aluminum alloy die-cast bottom, stainless steel hardware
- IP67
- Fixed: Optional Permanent mount, Pole of Din mounting and magnetic mount with Cig plug
- EMC: Compliance with ECE R10.04
- E-mark approved

Application: widely used on emergency vehicles, agricultural machinery, boat, road safety, navigation lantern, obstacle light for building.



BL155-I / BL155-II LED Beacon

SAE RoHS CE

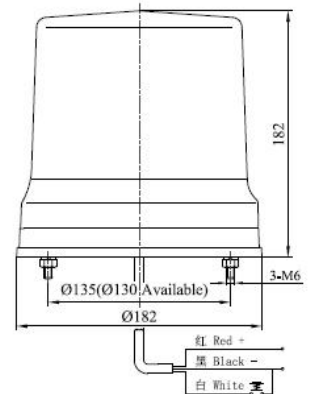
Description: Application of patent technology, according to SAE J845 requirement to develop, the beacon projects even and continuous light in a horizontal 360° degree and achieve a brand-new performance.



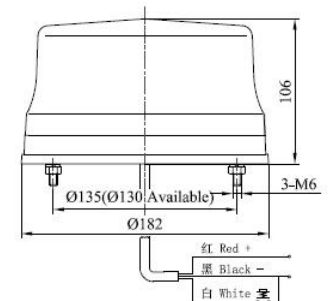
BL155-I-A Amber BL155-I-BL Blue
BL155-I-R Red BL155-I-G Green



BL155-II-A Amber BL155-II-BL Blue
BL155-II-R Red BL155-II-G Green



Optional Flash light pattern, by using the white wire to touch the Black wire*-,.



Optional Flash light pattern, by using the white wire to touch the Black wire*-,.

- Operating voltage: DC9~33V.
- Operating temperature: -40~65°C.
- 155-I Light source: 144PCS Gen2 LEDs, ~24W max.
- 155-II Light source: 72PCS Gen2 LEDs, ~12W max.
- Color: Red, Blue, Amber, Red & blue, Green, White etc. colored lens or clear lens with colored LEDs.
- 360°strobe, Built-in Flasher with 9 Flash light patterns and simulative rotating pattern.
- Optional Flash light pattern, by using the white wire to touch the negative wire(black one).
- Synchronous and Asynchronous flash patterns of two or more lamps is available.
- Reverse polarity protect.
- UV resistant of PC outer lens; Aluminum alloy die-cast bottom, with powder coated finished; stainless steel hardware.
- IP67.
- Fixed: permanent mount with screw.

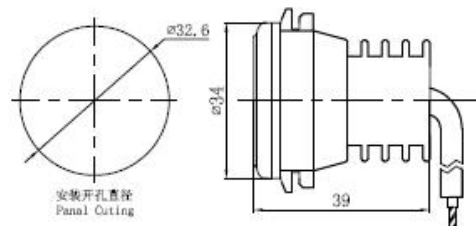
Application: Widely used on emergency vehicles, boat, road safety, navigation lantern, obstacle light for building.

T-M03 LED Warning Light

- Operating voltage: DC12V, DC24V.
- Operating temperature: -40~65°C
- Light source: 4pcs high power LEDs.
- Light color: Red, Blue, Amber.
- Comply with ECE R65
- E-mark Approval
- Built-in or interior flasher, Synchronous and Asynchronous flash patterns
- Reverse polarity protect
- UV resistant PC Lens
- IP67



External Dimmer



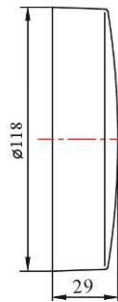
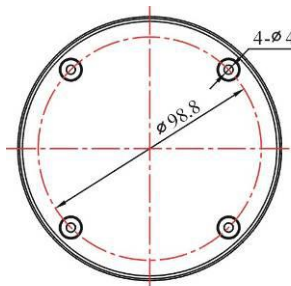
Kindon Security Equipment Co., Ltd.

Tel: +86 158 5851 5365 Email: sales@kindonsafety.com

SBL-118-S School Bus Stop Arm Light

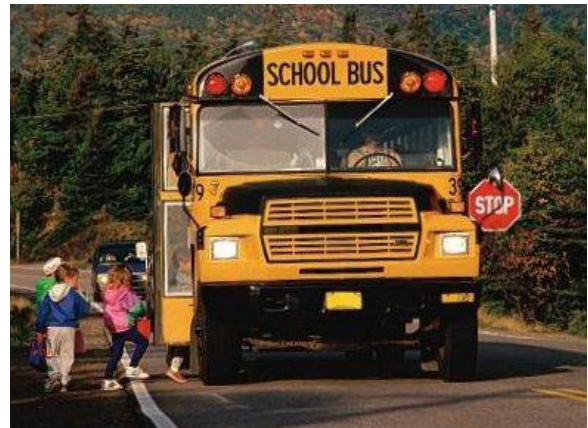
SAE RoHS CE

Description: Application of the latest patent technology, according to SAE requirements to develop.



Specs &Feature:

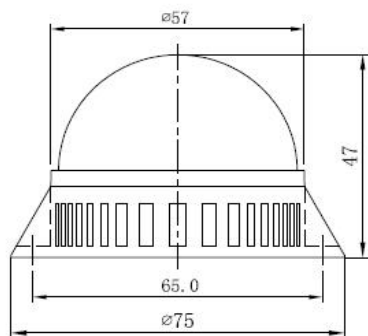
- Operating Voltage: DC9~33V.
- Operating Temperature: -40~65°C.
- Light Source: 16PCS of high light efficiency SMT LED Red Light.
- Compliance with SAE J1133
- Built-in Flasher, with 4 flash light patterns.
- Optional Flash light pattern.
- Synchronous and Asynchronous flash patterns.
- Reverse polarity protect.
- UV resistant of PC outer lens.
- IP67.
- Configure: Master Lamps 1pcs, Slave control lamp 1pcs, Slave lamp 2pcs.



C55-SL LED Sound and Light Warning Lamp

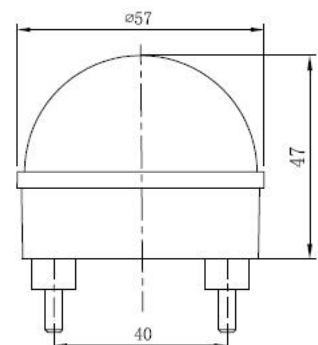
RoHS CE

Integral design of sound and light alarm. Compact structure, surface mount installation.



- Operating Voltage: DC12V or DC24V.
- Operating Temperature: -40~65°C.
- Light Source: high light efficiency SMT LEDs, Red, Amber, White, Green etc.
- Power consumption: 1.5W.
- Built-in Flasher and buzzer, 70dB @1meter for the buzzer.
- UV resistant of PC outer lens.
- IP65.

New



Kindon Security Equipment Co., Ltd.

Tel: +86 158 5851 5365

Email: sales@kindonsafety.com

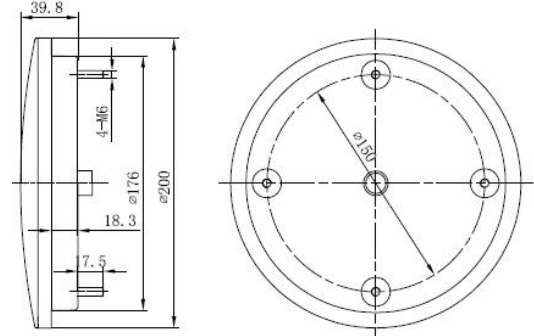
T-200/T-200A 200mm LED Traffic Light

RoHS CE

Specs & feature:

- Operating voltage: DC12V, DC 24V
- Operating Temperature: -40~65°C.
- Light Source: high light efficiency LEDs.
- Compliance with EN12368 & GB14887& EN12352-Class L8H.
- Light Source: ■ Red, ■ Amber, ■ Green, ■ Red/Amber
- UV resistant of PC outer lens.
- IP67.

Application: Mobile traffic signal lamp, Signal device.

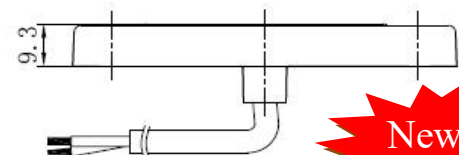
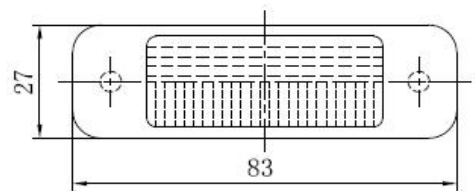


AL25-TJ LED Step Lamp

RoHS CE

- **Description:** Slim design, down illumination optical design provides a better lighting for a step.
- Operating voltage: DC12V; DC24V.
- Operating Temperature: -40~60°C.
- LED light source: 4 PCS LEDs.
- Light color: warm white: ~3000K, natural white ~4500K, pure white ~6000K, or other customized color blue, red etc.
- Frame color: white, black, chromed or other customized color
- IP67.

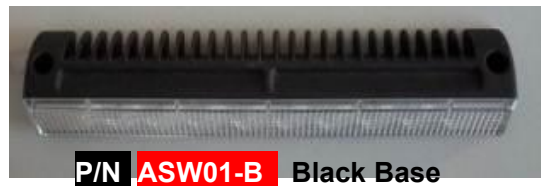
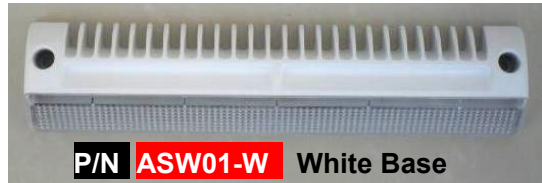
Applications: widely used for cabinet, cabin, buses, caravan, shelter refrigerator car, special vehicles etc.



ASW01 LED Awning Lamp/Side light for Vehicle

RoHS CE

Description: 40 degree down illumination for more efficient light on ground, surface mount installation, IP67 for outdoor use, die-casting aluminum base to ensure good heat radiating and lamp life.

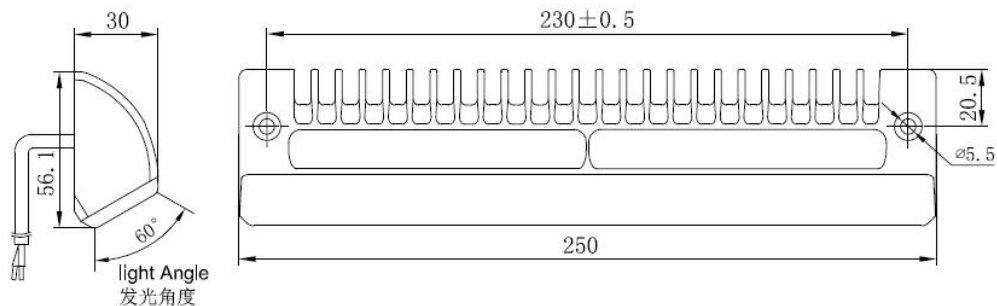


Specification:

- Operating Voltage: 10~33VDC.
- Operating Temperature: -40~65°C.
- Light Source: 9*3W high light efficiency LED; CRI>80.
- Light Color: ~3000K warm white, 4000~4500K natural white, 6000~6500K pure white.
- Luminous Flux: >1200lm.
- Light Emitting Angle: H=80°/V=60°(vertical direction of the outer lens).
- Power: ~14W, Operating Current: 1.2A@12VDC; 0.65A@24VDC.
- PC lens with UV-resistant.
- Aluminum die-casting Base, UV and corrosion resistant painting in white / black / red (optional) or other customized color.
- IP67.

Applications: widely used for shelter, cabin, motor home, caravan, refrigerator car, special vehicles mining tunnels and etc.

Dimension:



Kindon Security Equipment Co., Ltd.

Tel: +86 158 5851 5365 Email: sales@kindonsafety.com

SW Series LED Entrance Lamp/Side lighting for vehicle**RoHS CE**

Description: 40 degree down illumination for more efficient light; Surface mount Installation, waterproof design; White or Black painted aluminum extrusion housing design makes it easily to radiate heat, and ensures its long working life span.

**P/N: SW-09 9 " white housing****P/N: SW-09-B 9 " black housing****P/N: SW-16 16 " white housing****P/N: SW-16-B 16 " black housing**

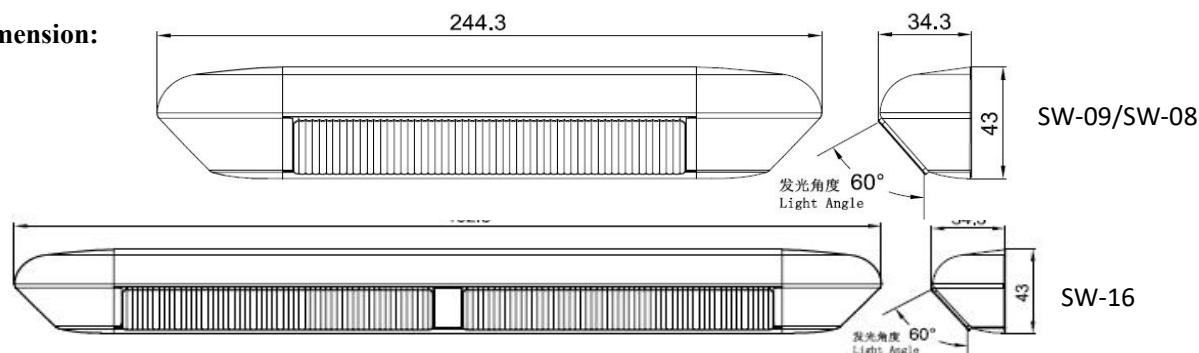
- Operating Voltage: 10~33V DC.
- Operating Temperature: -40~65℃.
- Light Source: high power efficiency LEDs, 1~3W/LED, CRI>80.
- Light Color: ~3000K warm white, 4000~4500K natural white, 6000~6500K pure white.

**SW-08-CR 8 " Chromed housing****SW-08-B 8 " Black housing****SW-08 8 " White housing**

P/N	LED Qty	Power	Luminous Flux	Housing color	Remark
SW-09 SW-08	6pcs	9W	800lm	white	P9016
SW-09-B SW-08-B				black	
SW-08-CR	6pcs	9W	800lm	chrome	
SW-16	12pcs	18W	1500lm	white	P9016
SW-16-B				black	

- Light Emitting Angle: H80°/V=60°V(vertical direction of the outer lens).
- PC lens with UV-resistant.
- Aluminum extrusion housing, UV resistant painting in white / black or other customized color.
- IP67

Applications: widely used for shelter, cabin, motor home, caravan, refrigerator car, special vehicles mining tunnels and etc.

Dimension:**Kindon Security Equipment Co., Ltd.****Tel: +86 158 5851 5365****Email: sales@kindonsafety.com**

4Q4 4x4 " LED Work Lamp RoHS CE

Description: Designed with patented technology, more higher light efficiency than TIR lens, Precision die-casting aluminum base to ensure good heat radiation and lamp life, optional light pattern: Euro, Flood, Spot light beam.



4Q4 Euro



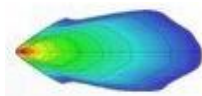
4Q4-F Flood



4Q4-SP Spot



White Frame



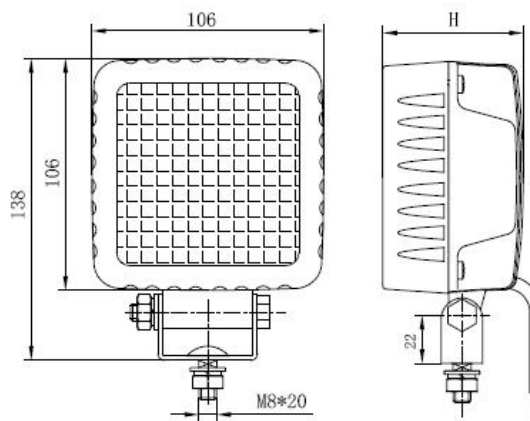
Specification:

- Operating Voltage: 10~33VDC; 10~60V DC.
- Operating Temperature: -40~80°C.
- Light Source: high power efficiency LED, CRI>80.
- Light Color: pure white 6000~6500K; Warm white ~3000K; natural white 4000~4500K or others customized light color, such as Amber, Blue, Red.
- PC outer lens, UV resistant.
- Aluminum alloy die-cast housing, UV and corrosion resistant painting, stainless steel bracket.
- IP67.
- CE approved.

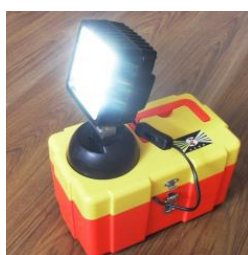


With IP67 switch

Application: widely used for engineering vehicle, mining, agriculture machinery, fork truck, dun or other special vehicle.



P/N	LEDs	Power	Luminous Flux	Thickness H
4Q4	9*3W	15 watt <u>1.3A@12VDC</u>	~1400lm	64mm
4Q4H more powerful	9*3W	18 watt <u>1.6 A@12VDC</u>	~1700lm	70mm
4Q4E Economical	9*1~3W	12 watt <u>1.0A@12VDC</u>	~1100lm	59mm



**CP-4Q 4
Rechargeable**



With magnet



4Q4-A Amber

4Q5 4x5 " LED Work Lamp

RoHS CE

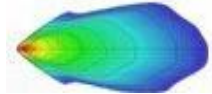
Description: Designed with patented technology, more higher light efficiency than TIR lens, Precision die-cast aluminum base to ensure good heat dissipation and lamp life, optional light pattern: Euro, Flood light Beam



4Q5 Euro



4Q5-F Flood



White frame

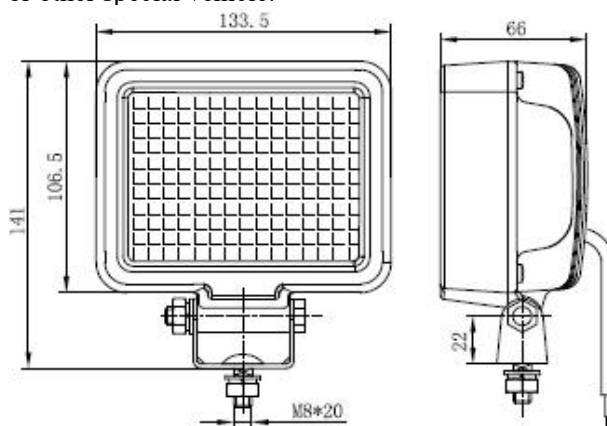


With IP67 switch

Specification:

- Operating Voltage: 10~33VDC; AC85~265V.
- Operating Temperature: -40~80°C.
- Light Source: 12PCS high efficient 3W LED, CRI>80.
- Light Color: pure white 6000 ~ 6500K; Warm white ~3000K; natural white 4000 ~ 4500K.
- Luminous: ~1700lm.
- Power: ~18W, Operating Current: 1.5A@12VDC; 0.8A@24VDC
- PC lens with UV-resistant
- Aluminum alloy die-cast housing, UV and corrosion resistant painting, stainless steel bracket.
- IP67.
- CE-EMC approved.

Application: widely used for engineering vehicle, mining machine, agriculture machinery, fork truck, dune buggy or other special vehicle.



With magnet



Portable



Kindon Security Equipment Co., Ltd.

Tel: +86 158 5851 5365 Email: sales@kindonsafety.com

5Q8 5x8 " LED Work Lamp

RoHS CE

Description: Designed with patented technology, more higher light efficiency than TIR lens, Precision die-cast aluminum base to ensure good heat dissipation and lamp life. Optional light pattern: Euro, Flood light beam

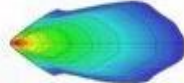


White Frame

5Q8 Euro

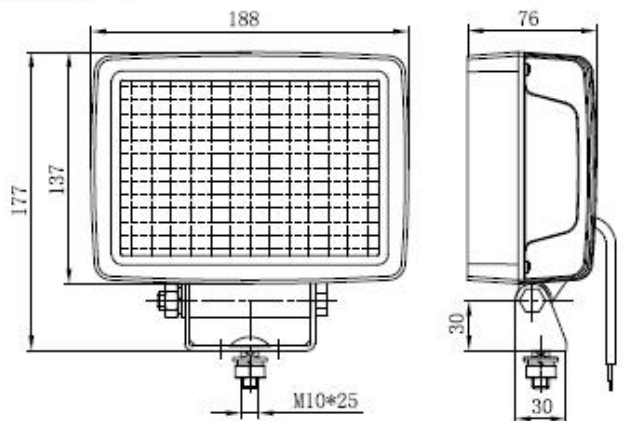


4Q5-F Flood



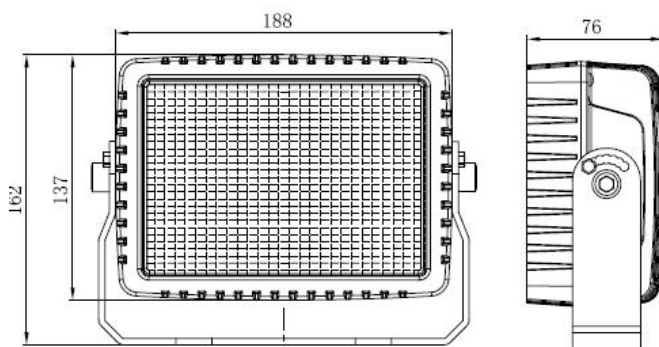
Specification

- Operating Voltage: 10~33VDC; AC85~265V.
- Operating Temperature: -40~80°C.
- Light Source: 24PCS high light efficiency 3W LED, CRI>80.
- Light Color: pure white 6000~6500K; Warm white ~3000K; natural white 4000~4500K.
- Luminous: ~3600lm.
- Power: ~40W, operating current: 3.2A@12VDC; 1.6A@24VDC.
- PC lens with UV-resistant.
- Aluminum alloy die-cast housing, UV and corrosion resistant painting, stainless steel bracket.
- IP67.
- CE approved.



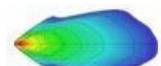
5Q8-II 5x8 " LED Work Lamp, II Type

RoHS CE



Specification:
See above

5Q8-II-F Flood



5Q8-II Euro

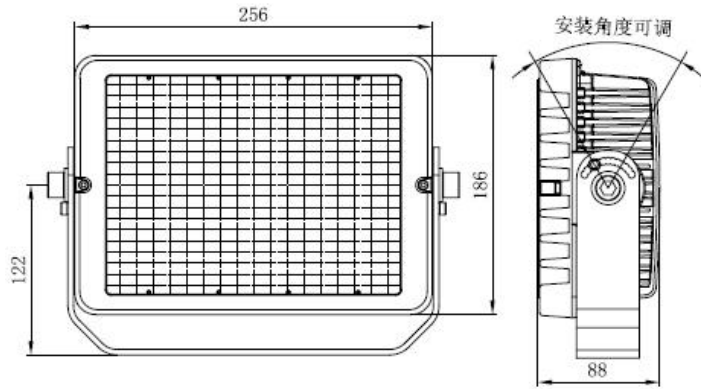


Application: widely used for engineering vehicle, mining, agriculture machinery, fork, truck, dune buggy etc.

Kindon Security Equipment Co., Ltd.

Tel: +86 158 5851 5365 Email: sales@kindonsafety.com

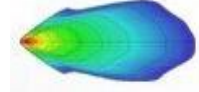
8Q10 8x10 " LED Work Lamp/Tunnel Lamp



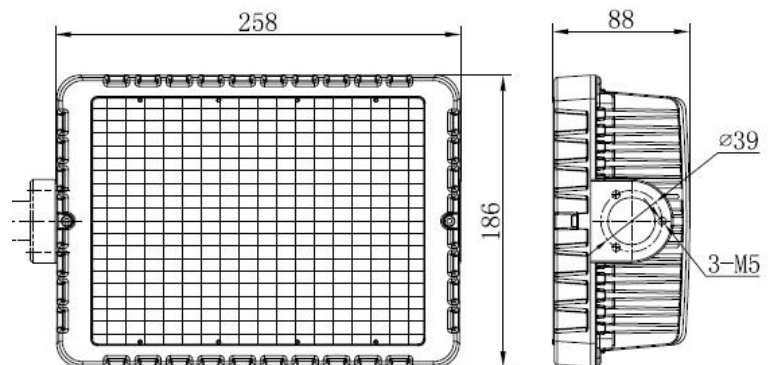
8Q10 Euro



8Q10-F Flood



- Operating Voltage: 10~33VDC; AC85~265V.
- Operating Temperature: -40~80°C.
- Light Source: 48 PCS high light efficiency 1~3W LED, CRI>80.
- Light Color: pure white 6000~6500K; natural white 4000~4500K
- Luminous: ~72000lm..
- Power: ~80W, Operating current: [6.8A@12VDC](#); [3.4A@24VDC](#)
- PC lens with UV-resistant.
- Aluminum alloy die-cast housing, UV and corrosion resistant painting, stainless steel bracket.
- IP67.
- CE-EMC approved.
- Light source: 48*3W high efficiency high power LEDs.
- Housing: aluminum die-casting housing UV and corrosion resistant painting.
- With UV-resistant PC lens.
- IP67.
- Life time: 30,000 hours continuous work.
- Surface color: white or black (optional).







Kindon Security Equipment Co., Ltd.

Tel: +86 158 5851 5365 Email: sales@kindonsafety.com

Powerful LED Work Lamp

RoHS CE

Flood light  Φ 85*88mm	Flood light  L*H*T=126*107*95mm	Flood light  L*H*T=126*107*95mm	Flood light  L*T*T=126*107*95mm
R3530	W5060	W6080	W60120

P/N	Voltage	LED	Power	luminous	IP Rated	Outer Lens
R3030	DC12~48V	1*30W 6000K	~24W	~2000 lm	IP67	PC
W5060	DC 12~48V	2*30W 6000K	~48W	~4000 lm	IP67	PC
W6080	DC12~48V	4*20W 6000K	~56W	~4800 lm	IP67	PC
W60120	DC 12~48V	6*20W 6000K	~84W	~7200 lm	IP67	PC

- Operating temperature: -40~80℃.
- aluminum die-casting housing UV and corrosion resistant painting, stainless steel bracket.
- CE-EMC compliance.

Application: widely used for engineering vehicle, mining, agriculture machinery, fork, truck, or other special vehicle.

OR-0210 LED Work Lamp/Spotlight RoHS CE



- Operating Voltage: 10-60V.
- Operating temperature: -40℃~65℃.
- LED Power: 8Watt max.
- LED luminous flux: 800 lm(for White).
- Light Color: pure white~6000K, Blue, Red etc.
- IP67.
- PC lens with UV-resistant, Aluminum alloy die-cast housing, UV and corrosion resistant painting.
- Fixed: With adjustable fixed bracket.
- **Application:** Widely used on Forklift, Moving storage equipment, as a Supplementary lighting lamps and lanterns.



Kindon Security Equipment Co., Ltd.

Tel: +86 158 5851 5365 Email: sales@kindonsafety.com

TW-1518 LED warning line light/ Line spot light RoHS CE

Description: Application of patent technology, high light intensity output to get a warning area on the ground.



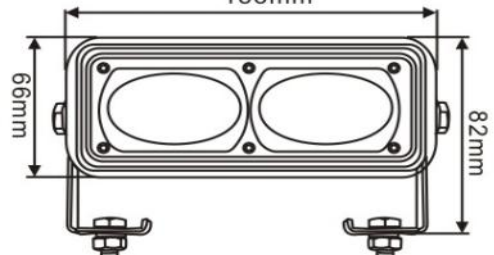
P/N: TW-1518-II



P/N: TW-1518 153mm

- Operating voltage: DC10~80V.
- Operating temperature: -40~65℃.
- Light source: 2*10W CREE LEDs.
- Power: 18Watt.
- LED light color: Blue, Red etc.
- Light intensity: 3000cd max
- IP67.
- EMC: ECE R10.4.
- PC lens with UV-resistant, Aluminum alloy die-cast housing, UV and corrosion resistant painting.
- Fixed: with adjustable fixed bracket

New



Application: Widely used on Forklift, Moving storage equipment, as a Supplementary lighting lamps.



Factory View



SMT Line



Lead Free wave soldering



Assembly line



Hot plate welder



Ultrasonic Welding



Vibration Friction



Aging Test



Photo colorimeter



Photometric test



Salt spray test



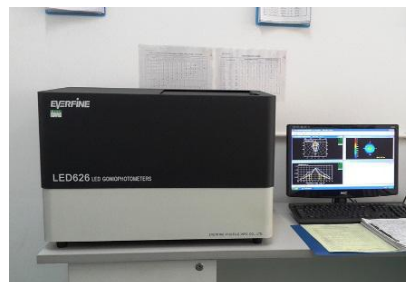
Vibration test



Environment test



Water-proof test



RoHS Test